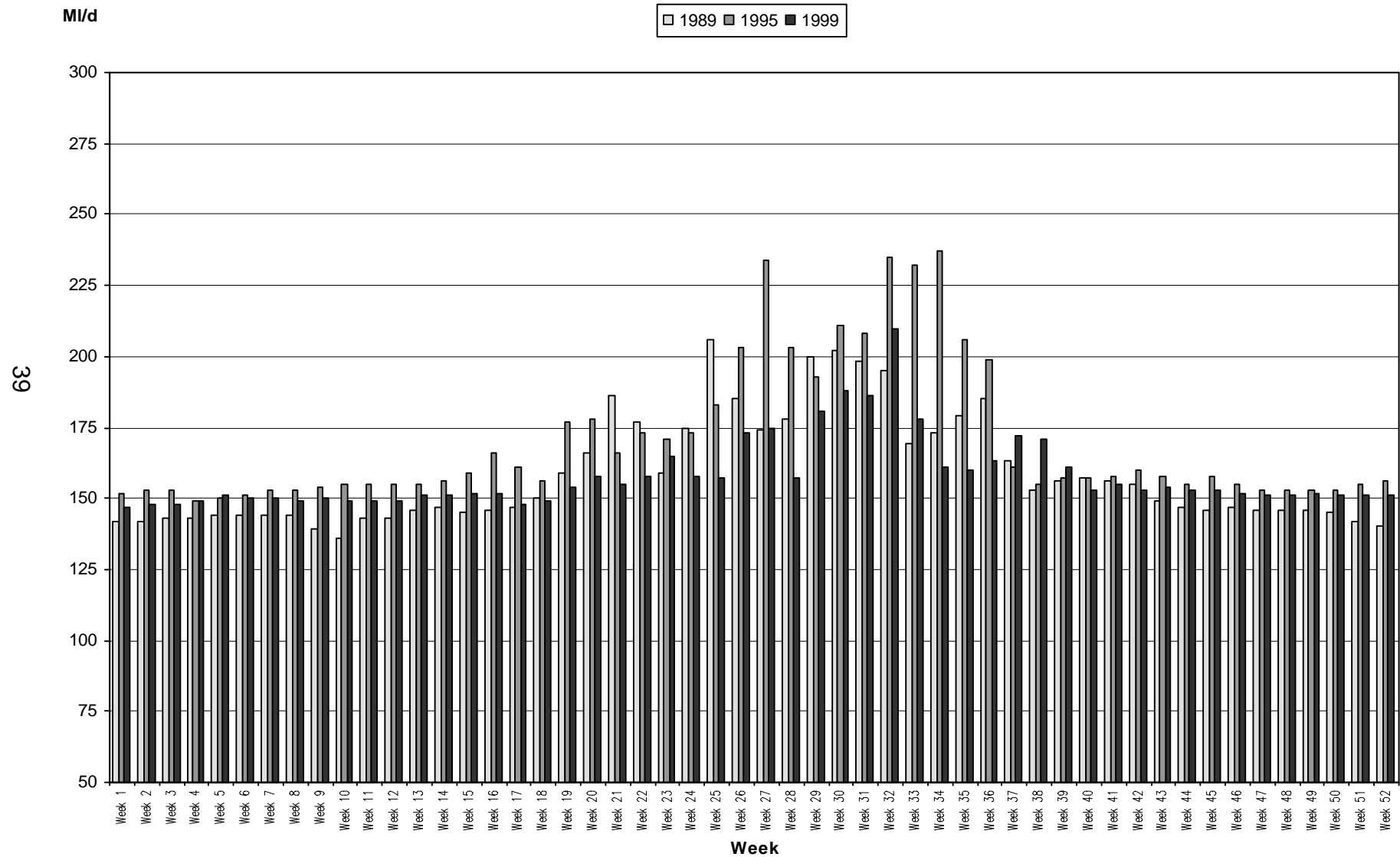


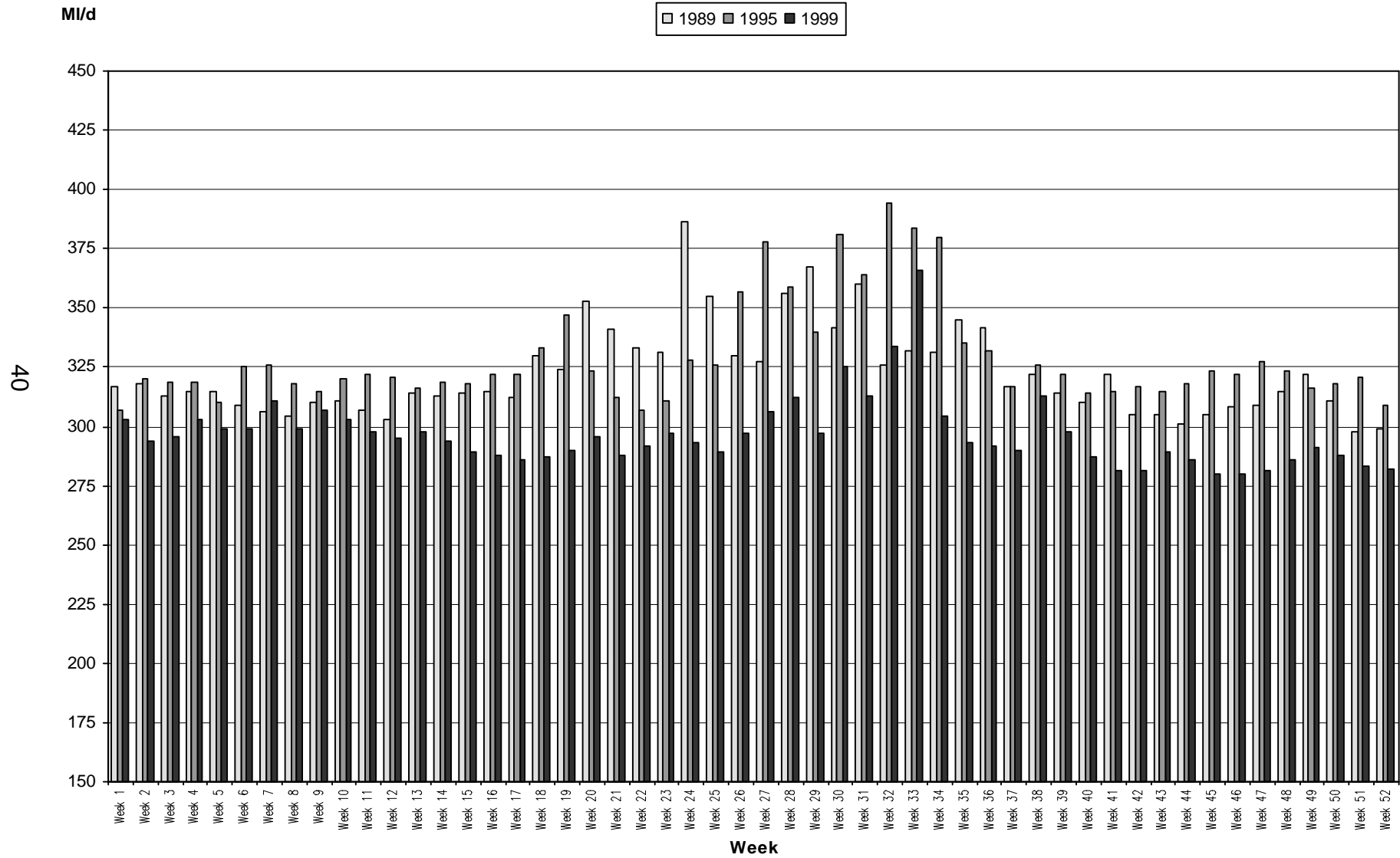
Bournemouth & West Hants Water

Average weekly distribution input



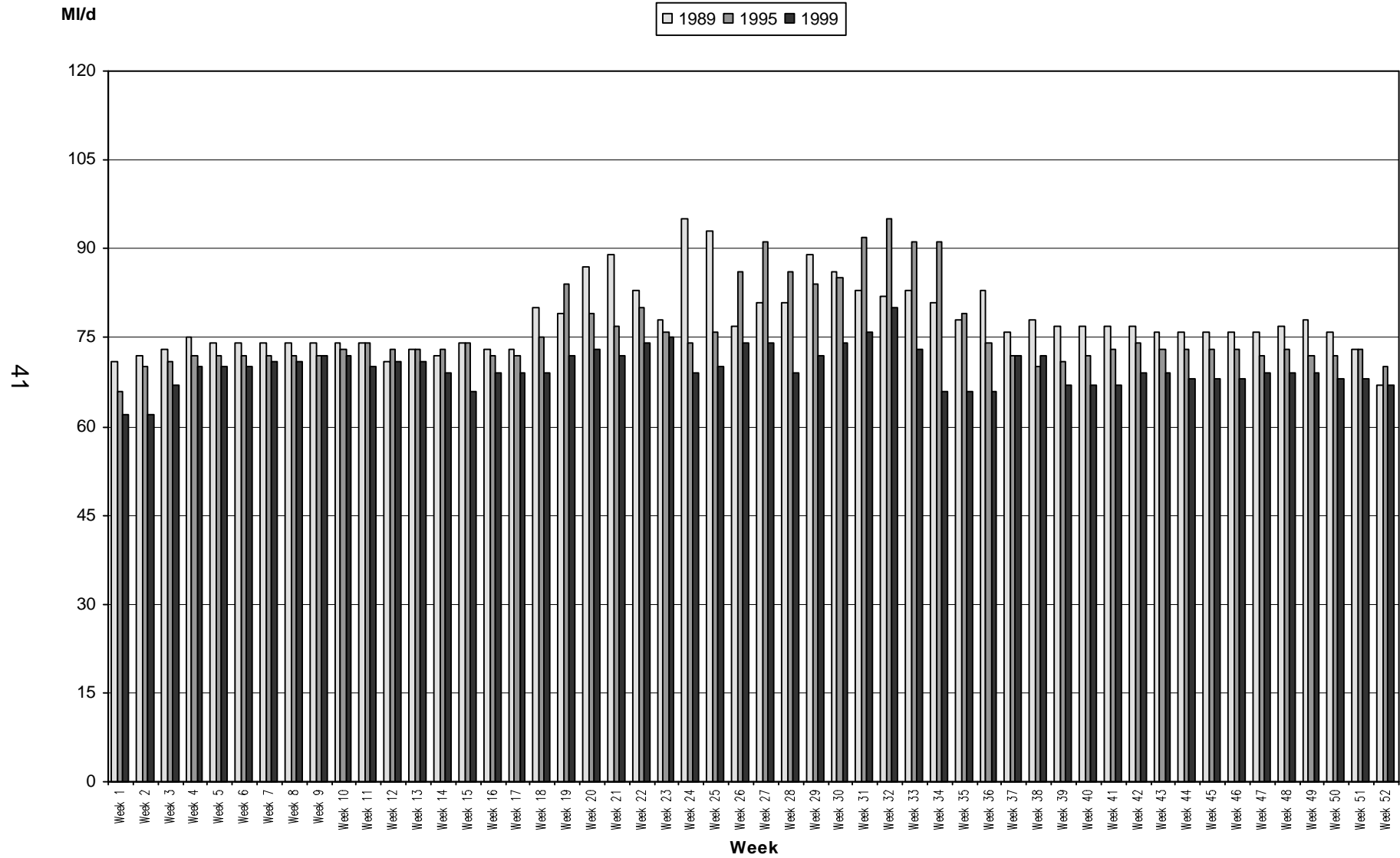
Bristol Water

Average weekly distribution input



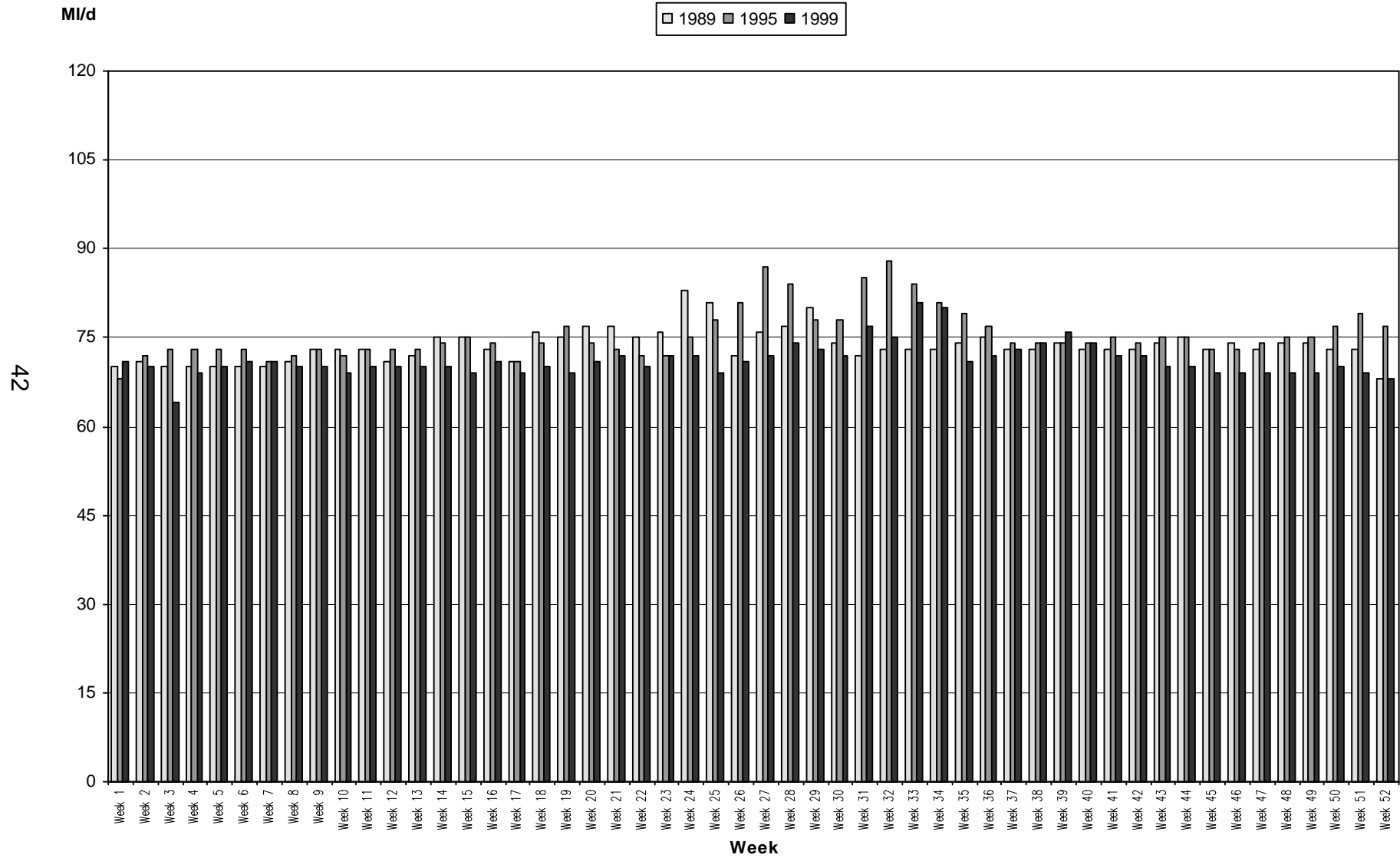
Cambridge Water

Average weekly distribution input



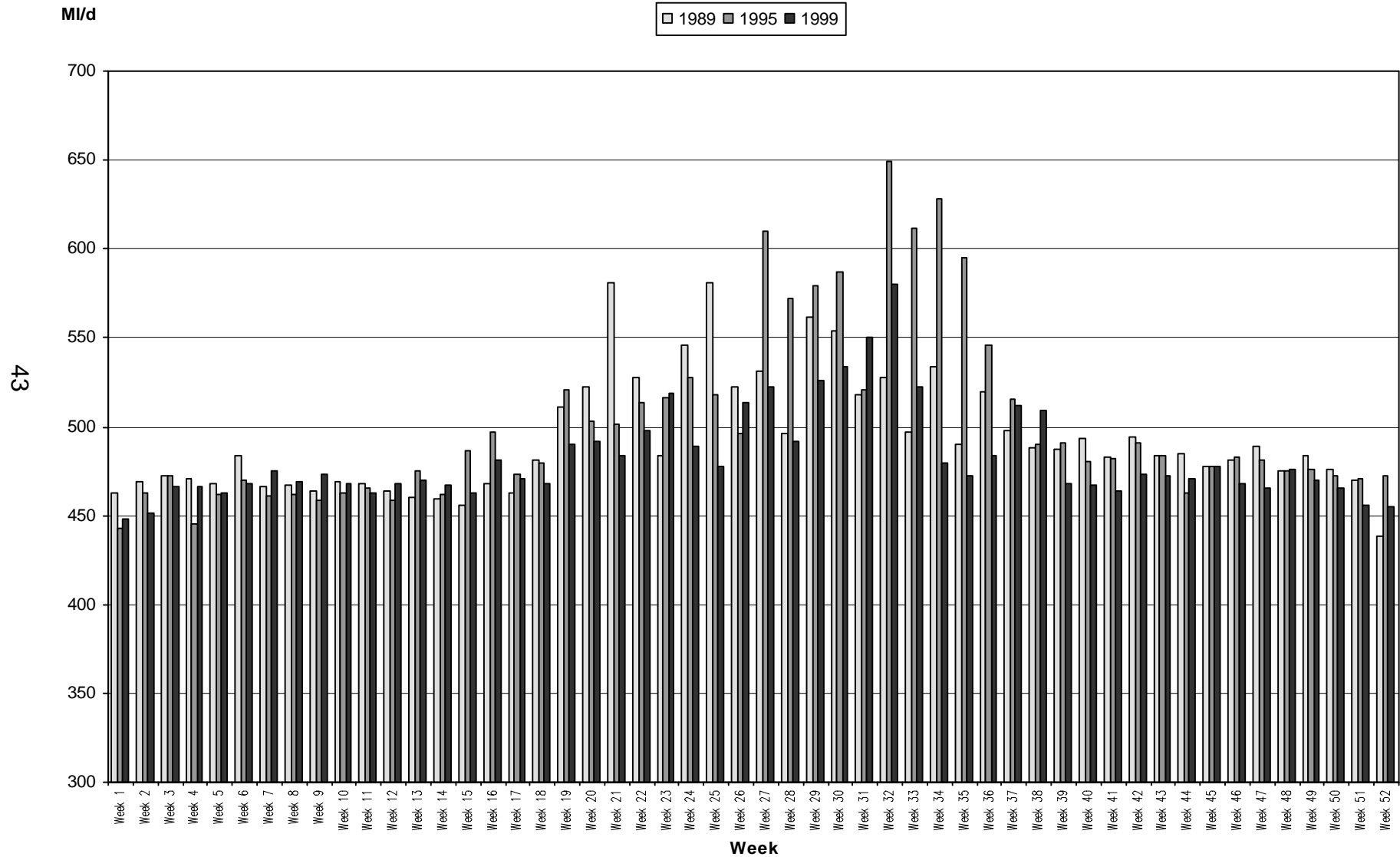
Dee Valley Water

Average weekly distribution input



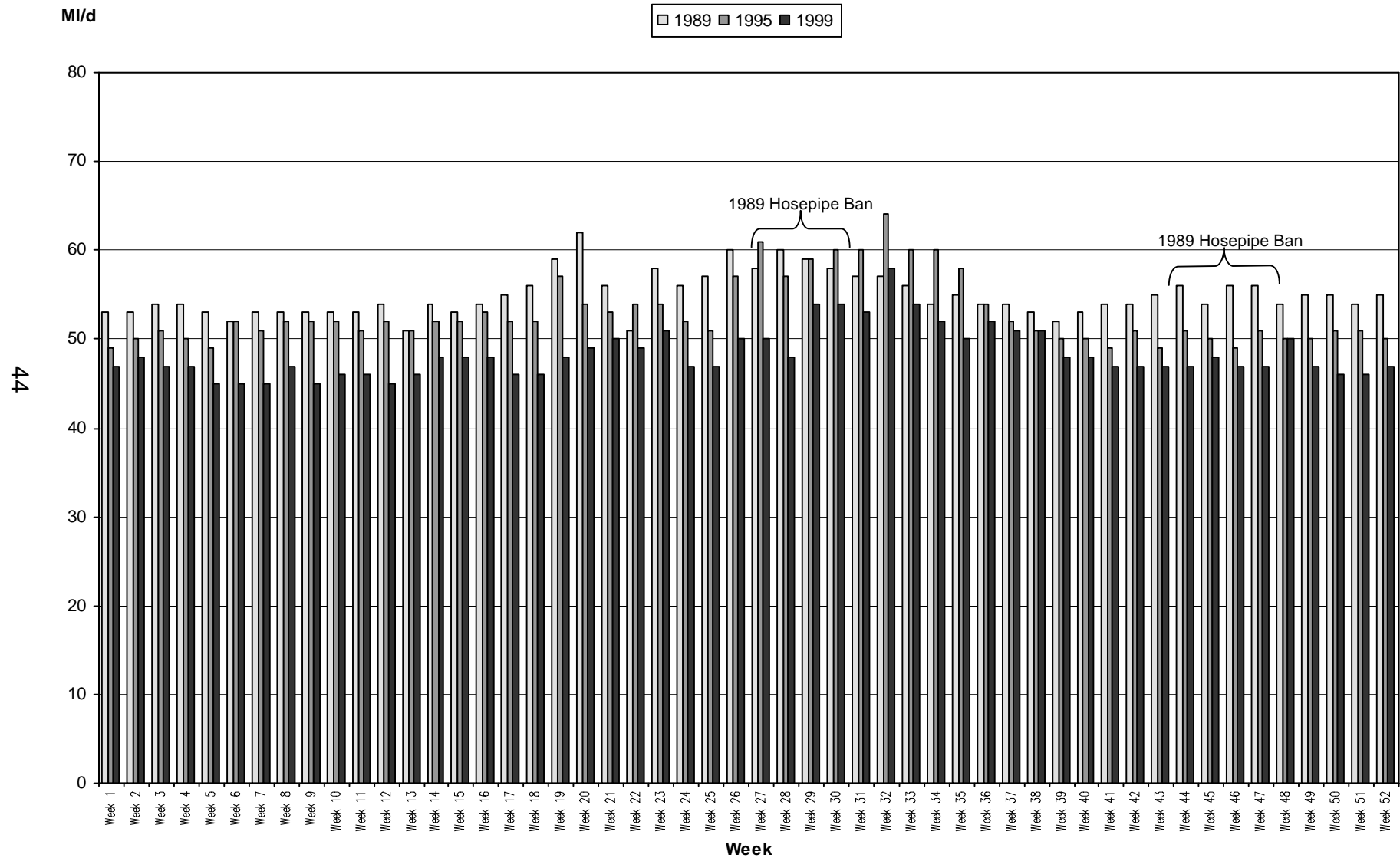
Essex & Suffolk Water

Average weekly distribution input



Folkestone & Dover Water

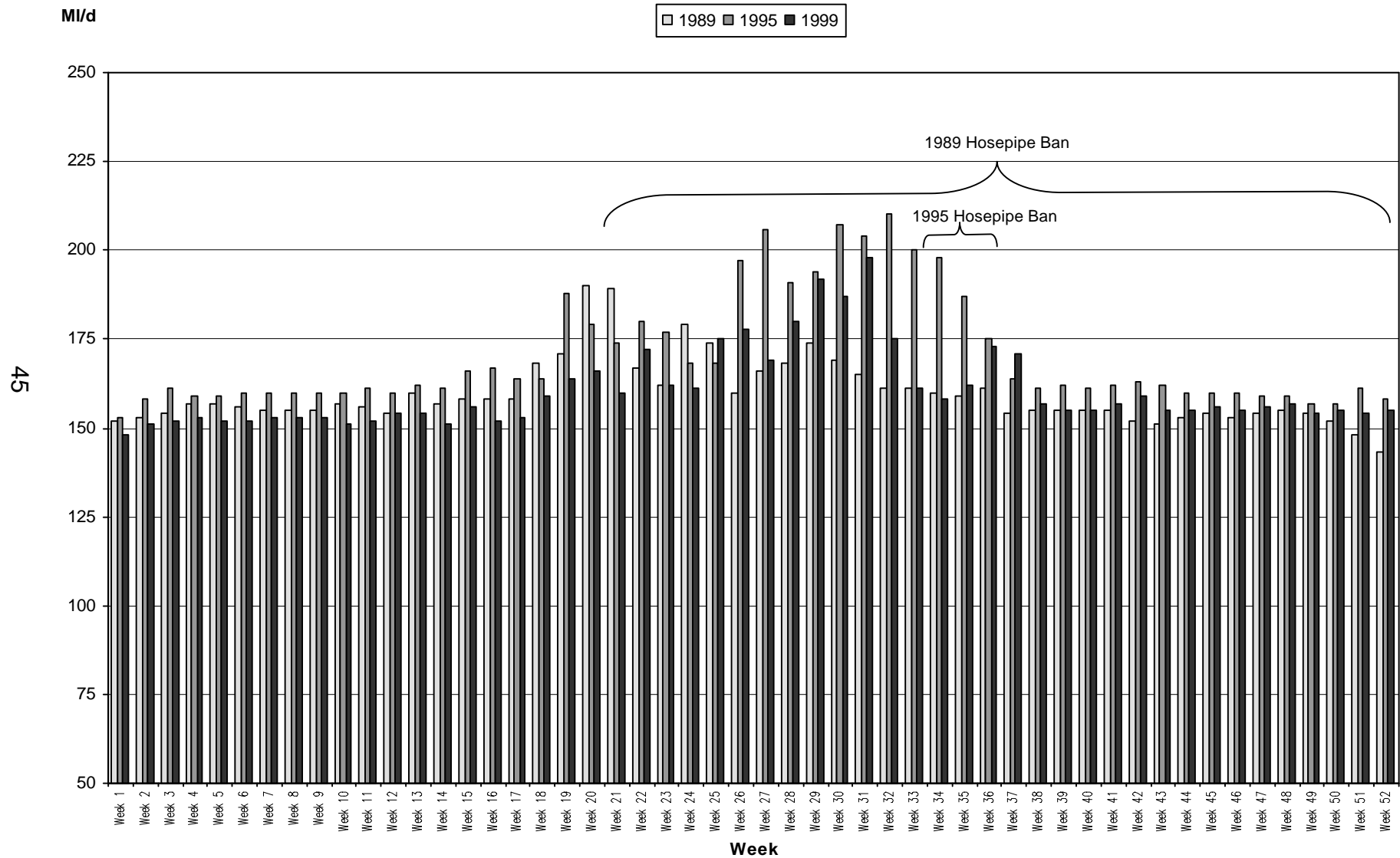
Average weekly distribution input



44

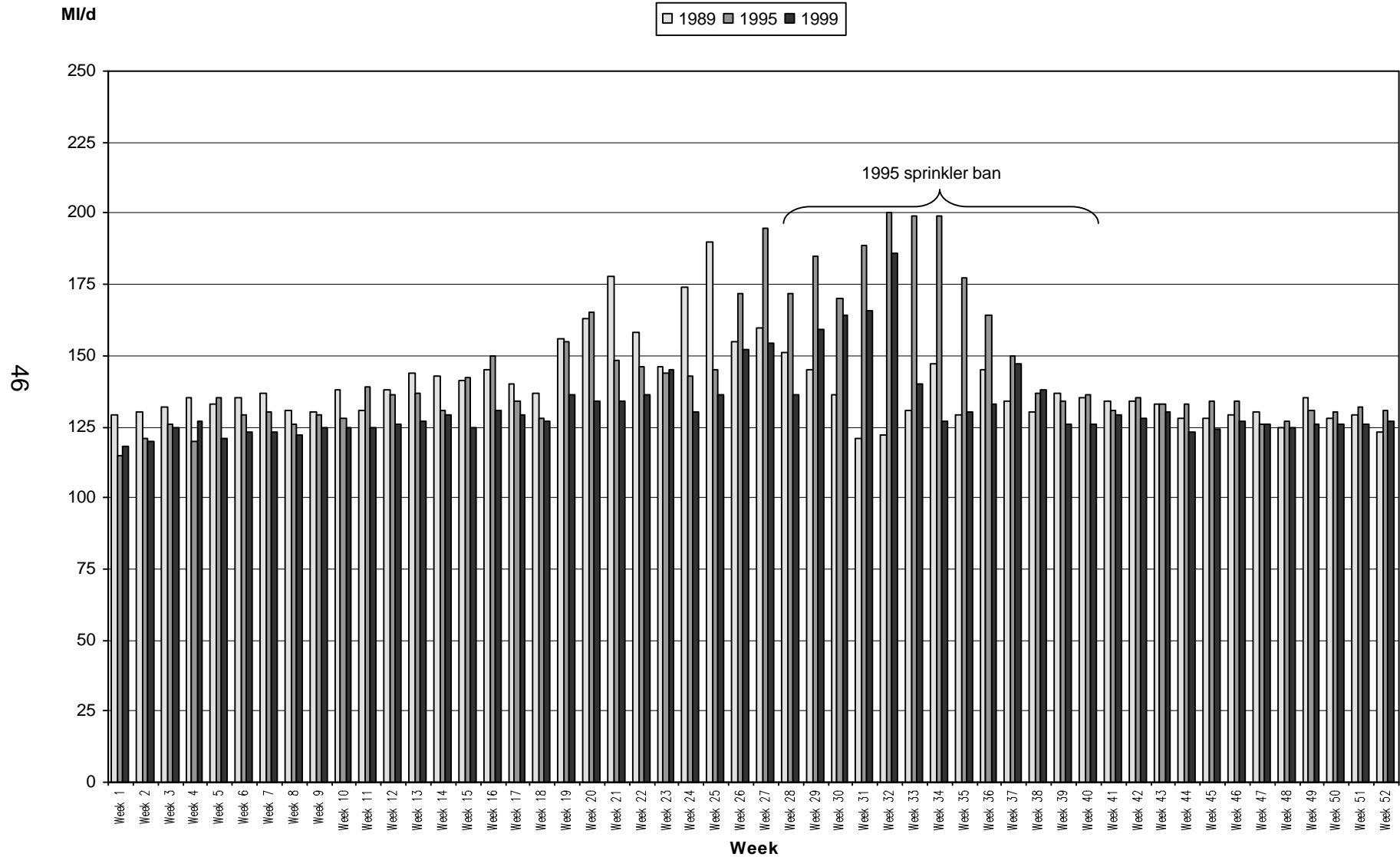
Mid Kent Water

Average weekly distribution input



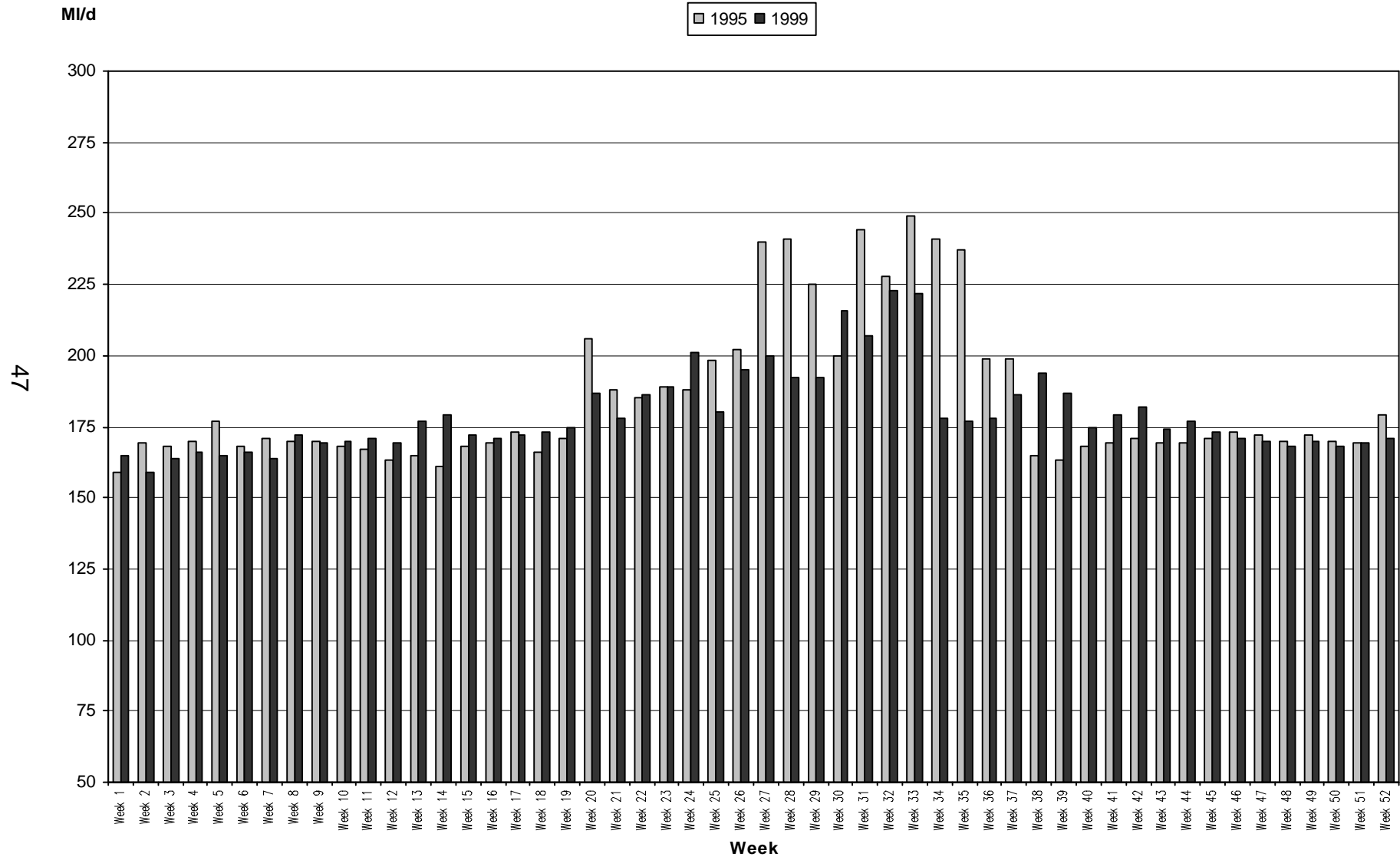
North Surrey Water

Average weekly distribution input



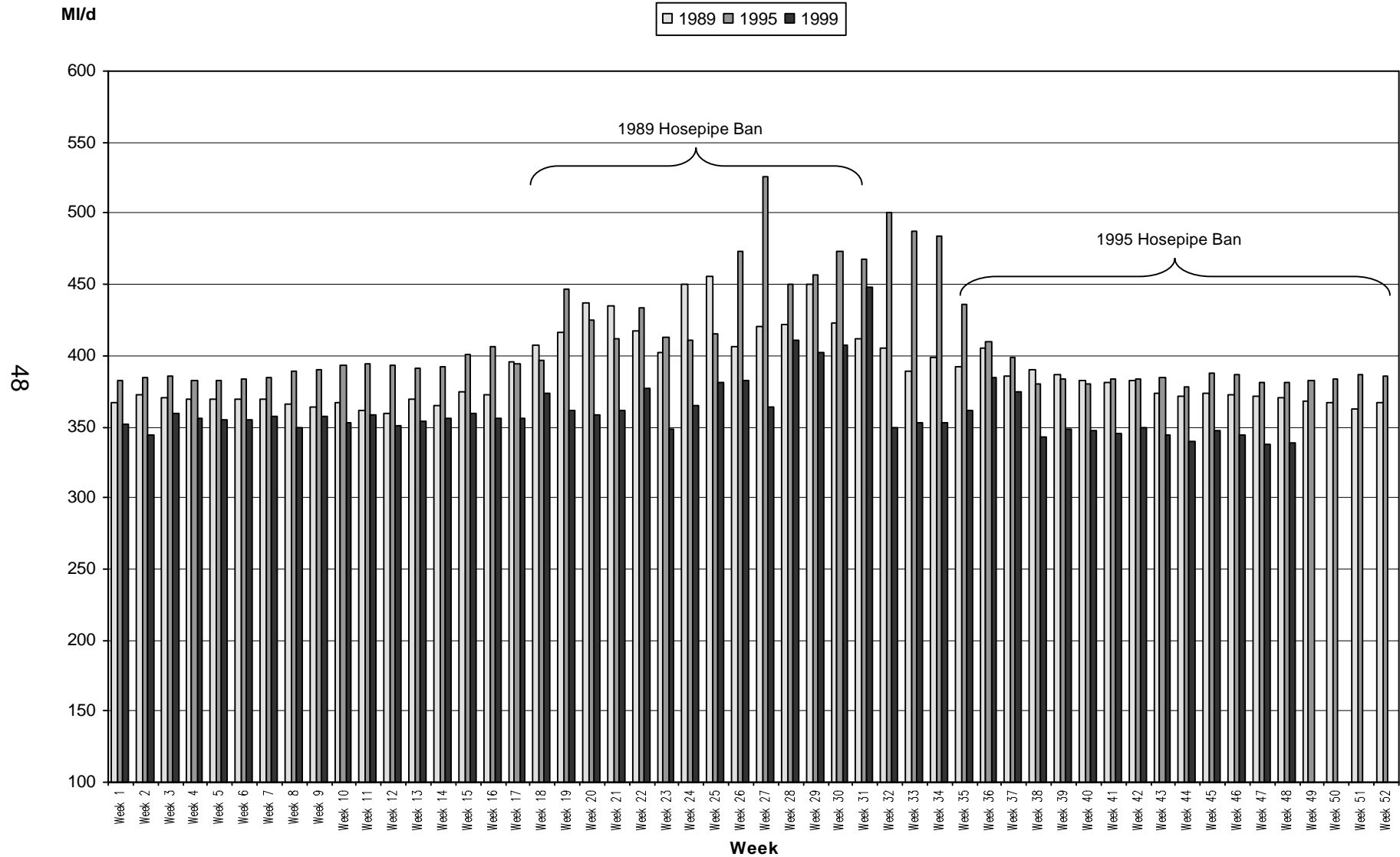
Portsmouth Water

Average weekly distribution input



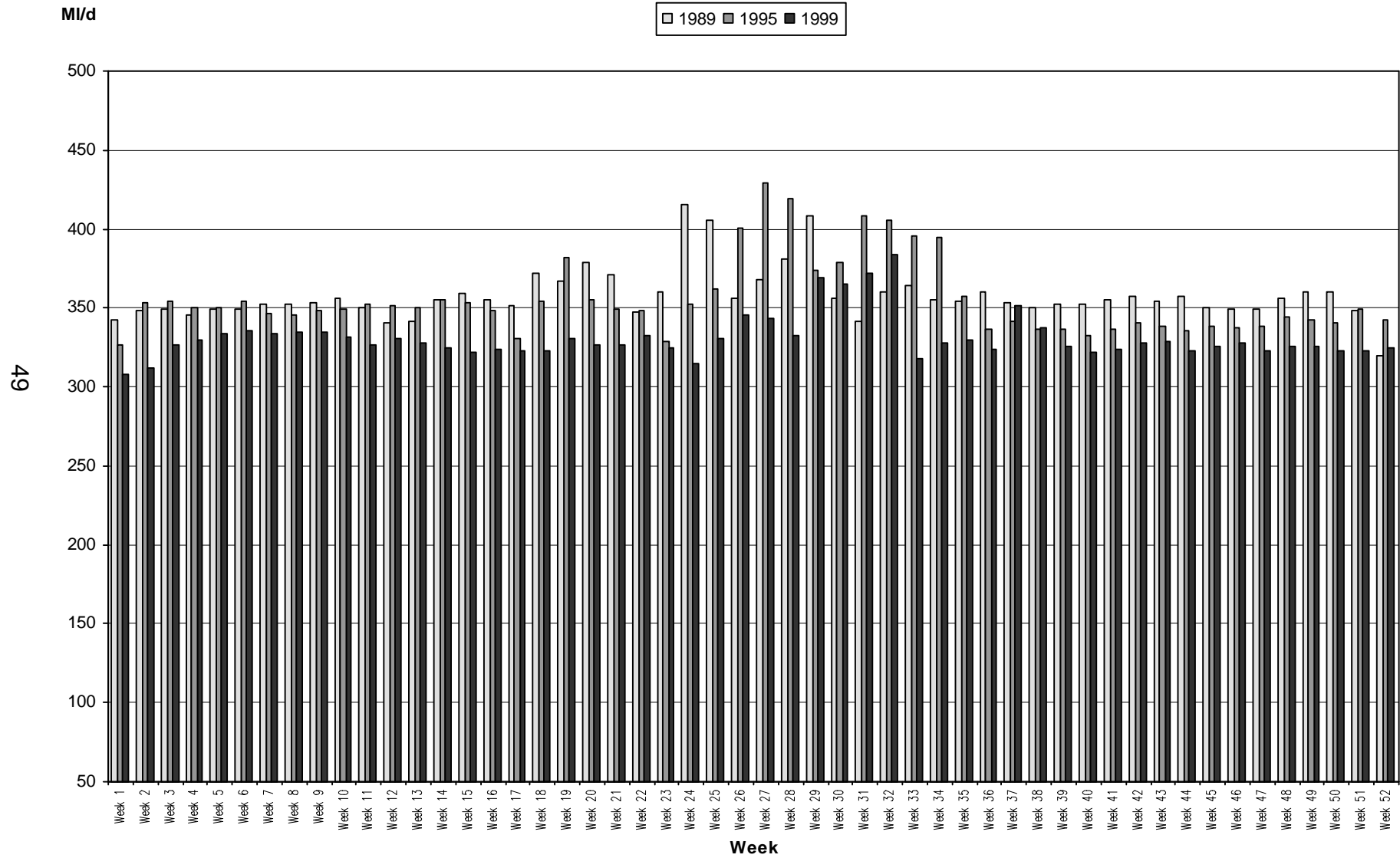
South East Water

Average weekly distribution input



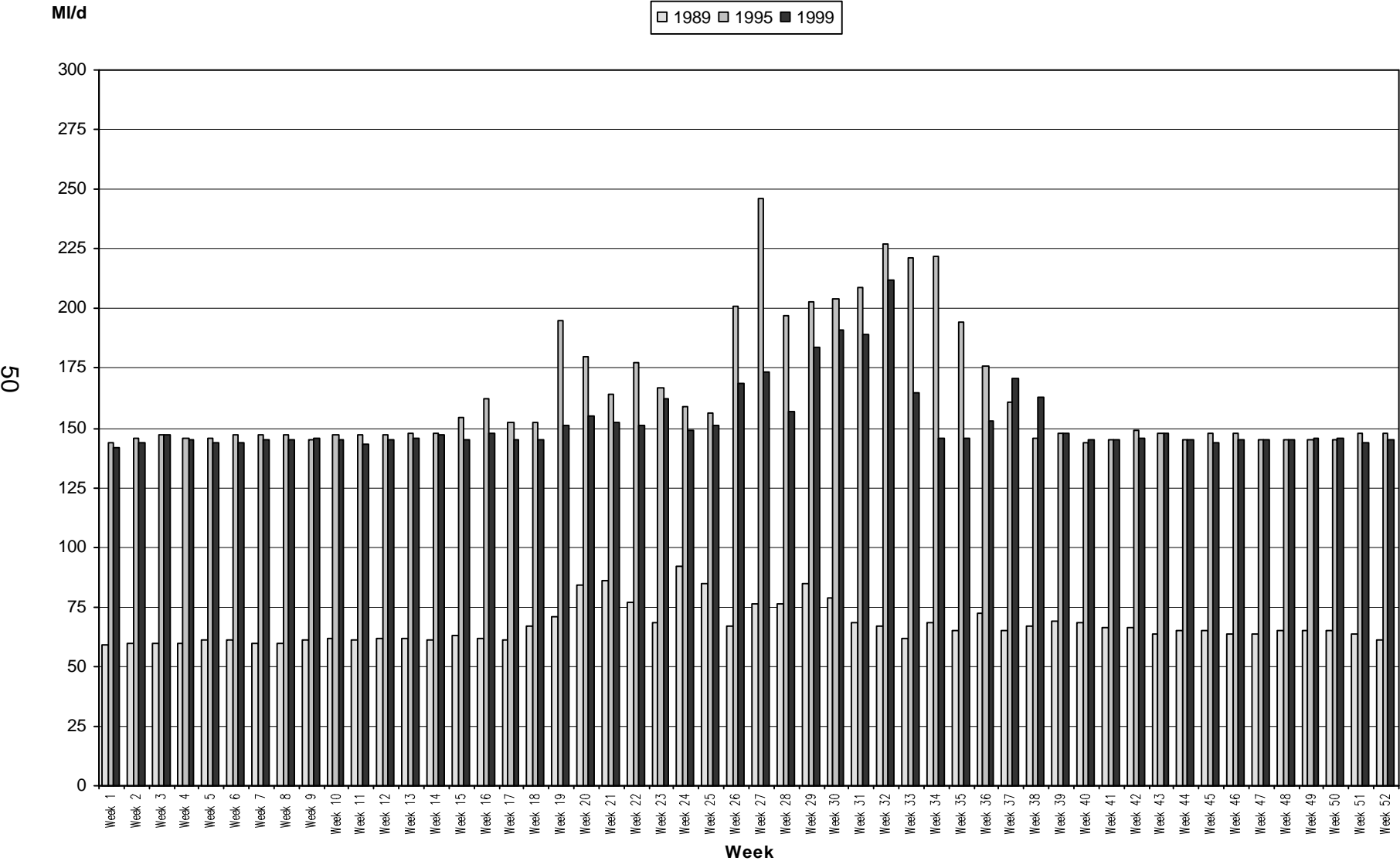
South Staffs Water

Average weekly distribution input



Sutton & East Surrey Water

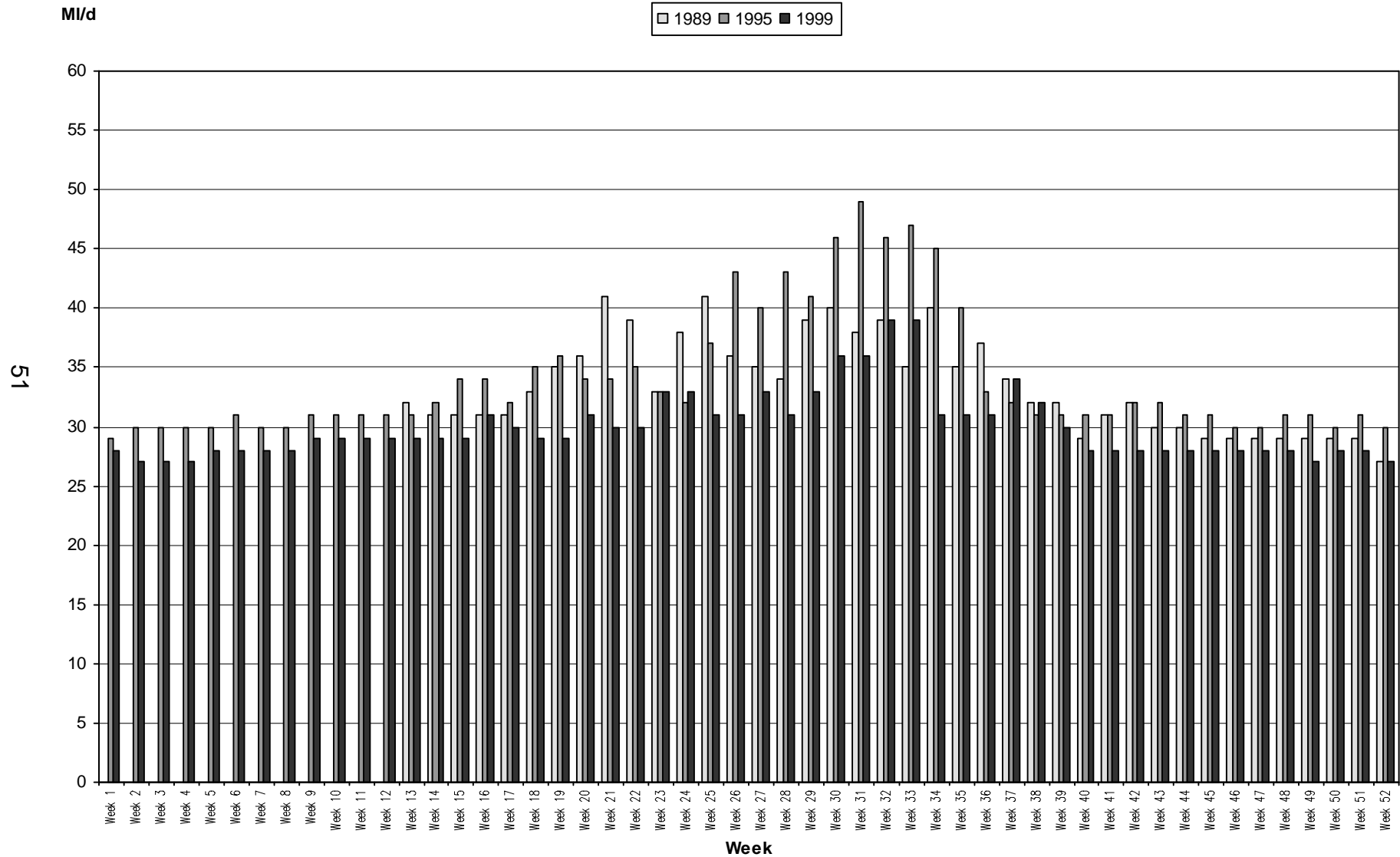
Average weekly distribution input



Note: The 1989 data is for the Sutton area only.

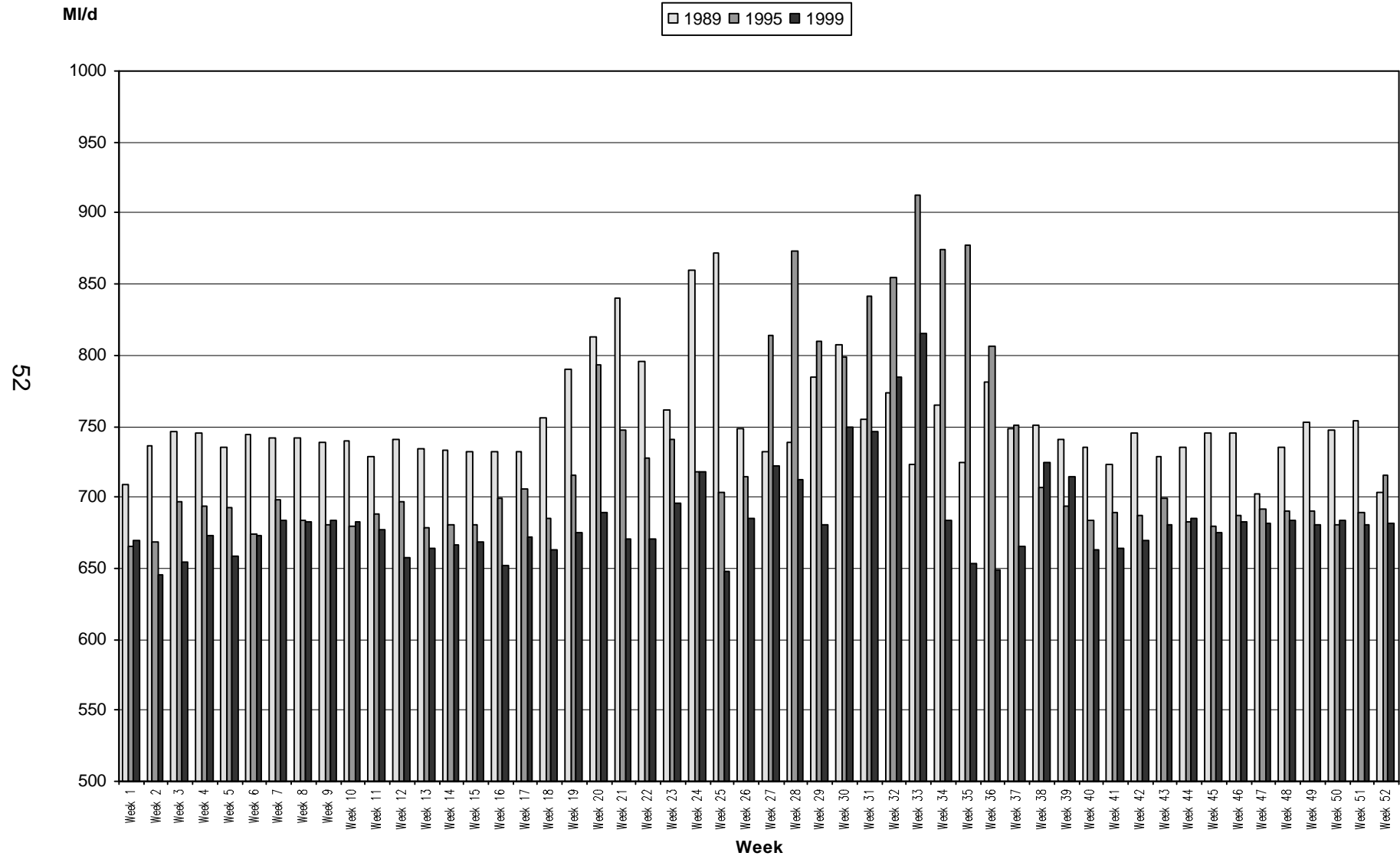
Tendring Hundred Water

Average weekly distribution input



Three Valleys Water

Average weekly distribution input



York Water

Average weekly distribution input

