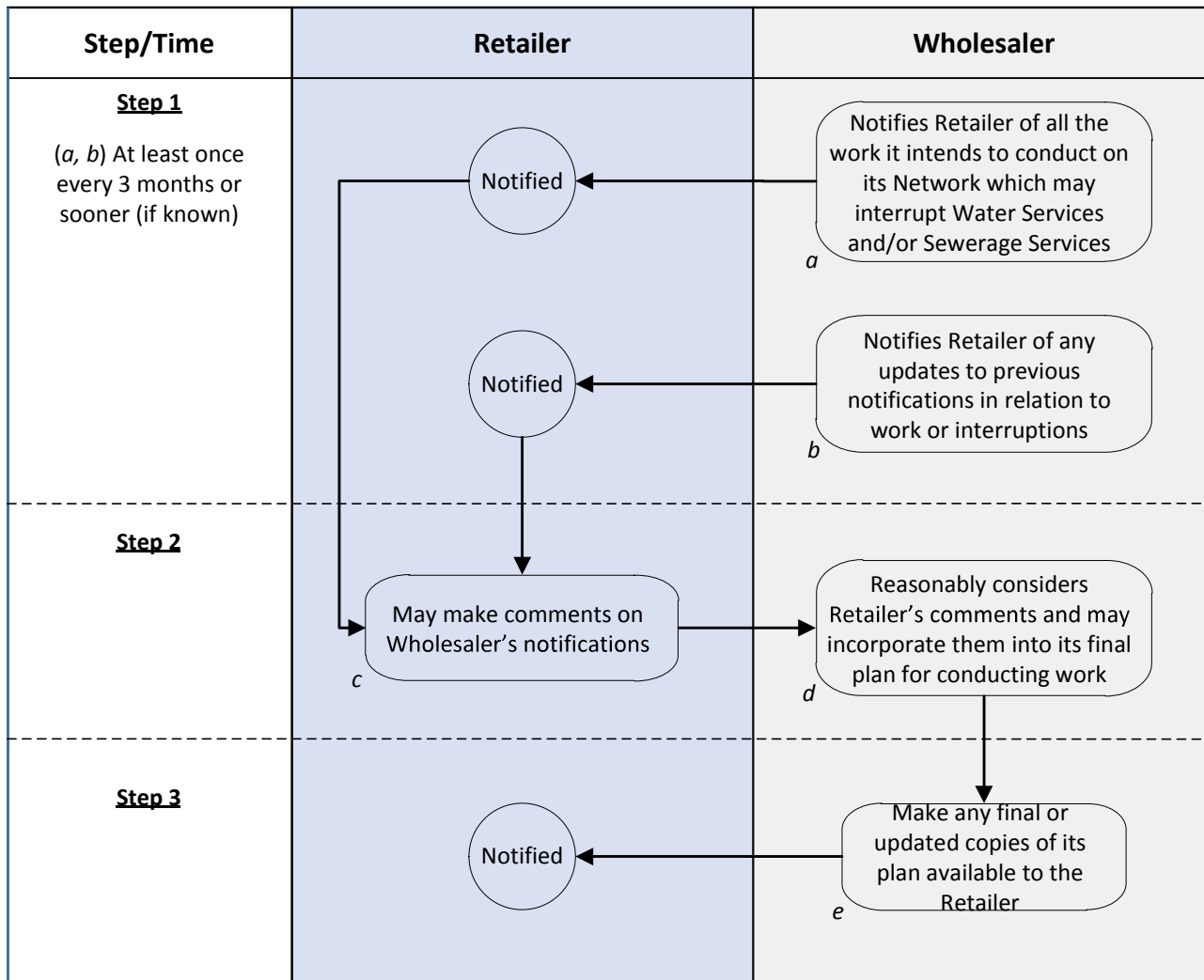




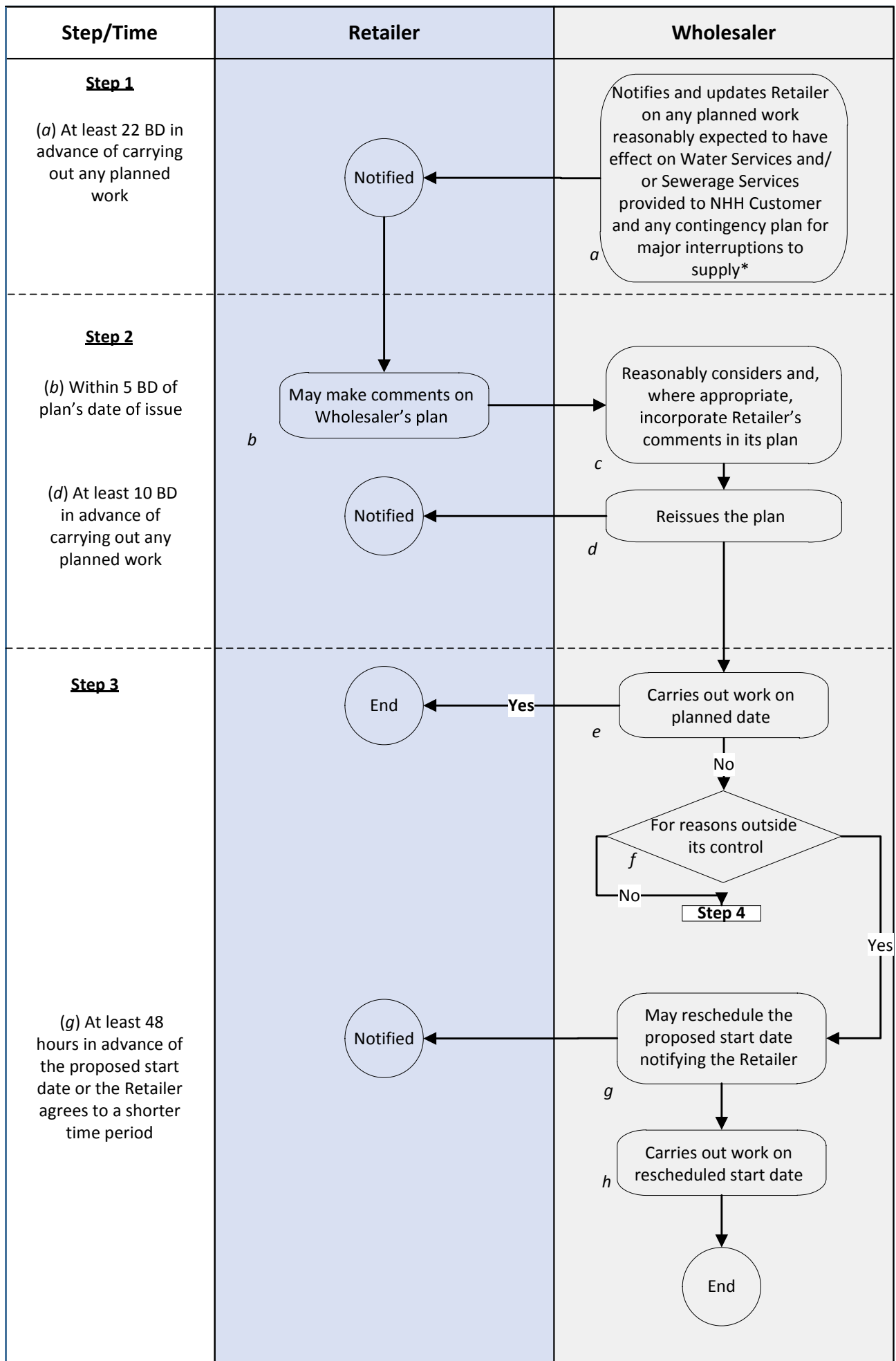
**Operational Terms:  
Annex D - Process diagrams for  
part D (Planned activities and  
affected services)**

September 2015

**Process D1 – Notification of capital works having an effect on Non-Household Customers – long-term planning**

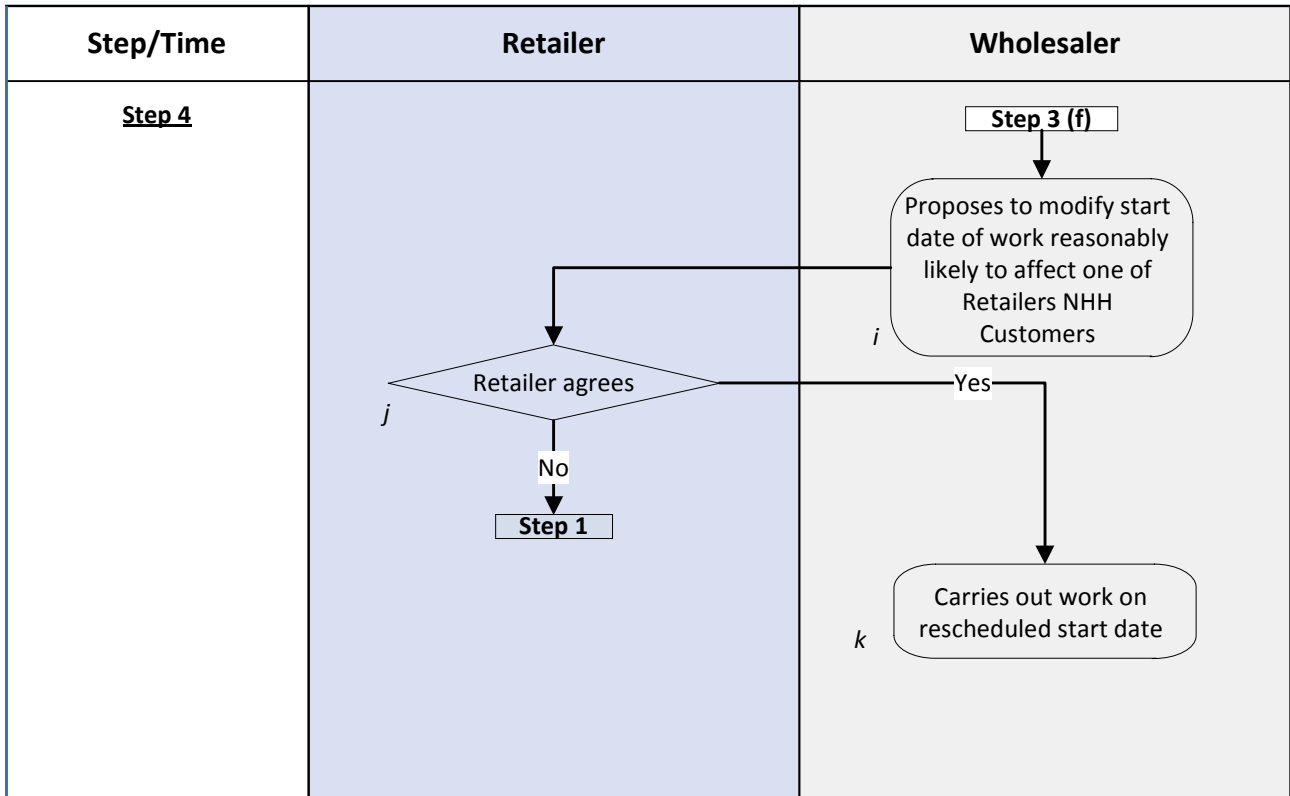


**Process D2 – Short-term planned activities [Steps 1 to 3]**



\* The Wholesaler shall keep the Retailer updated as information changes or further information becomes available.

**Process D2 – Short-term planned activities [Step 4]**



**Process D3 – Reactive activities**

