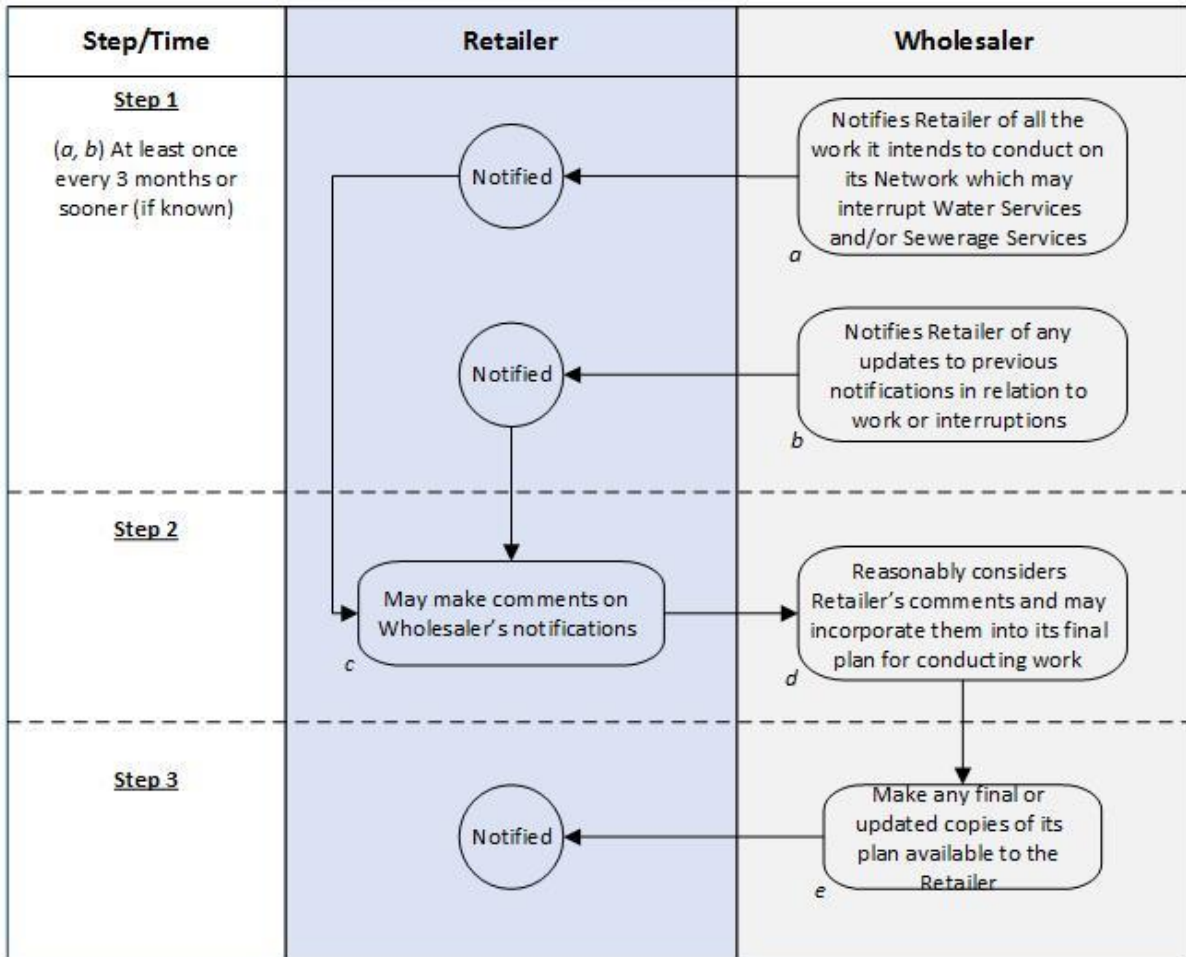


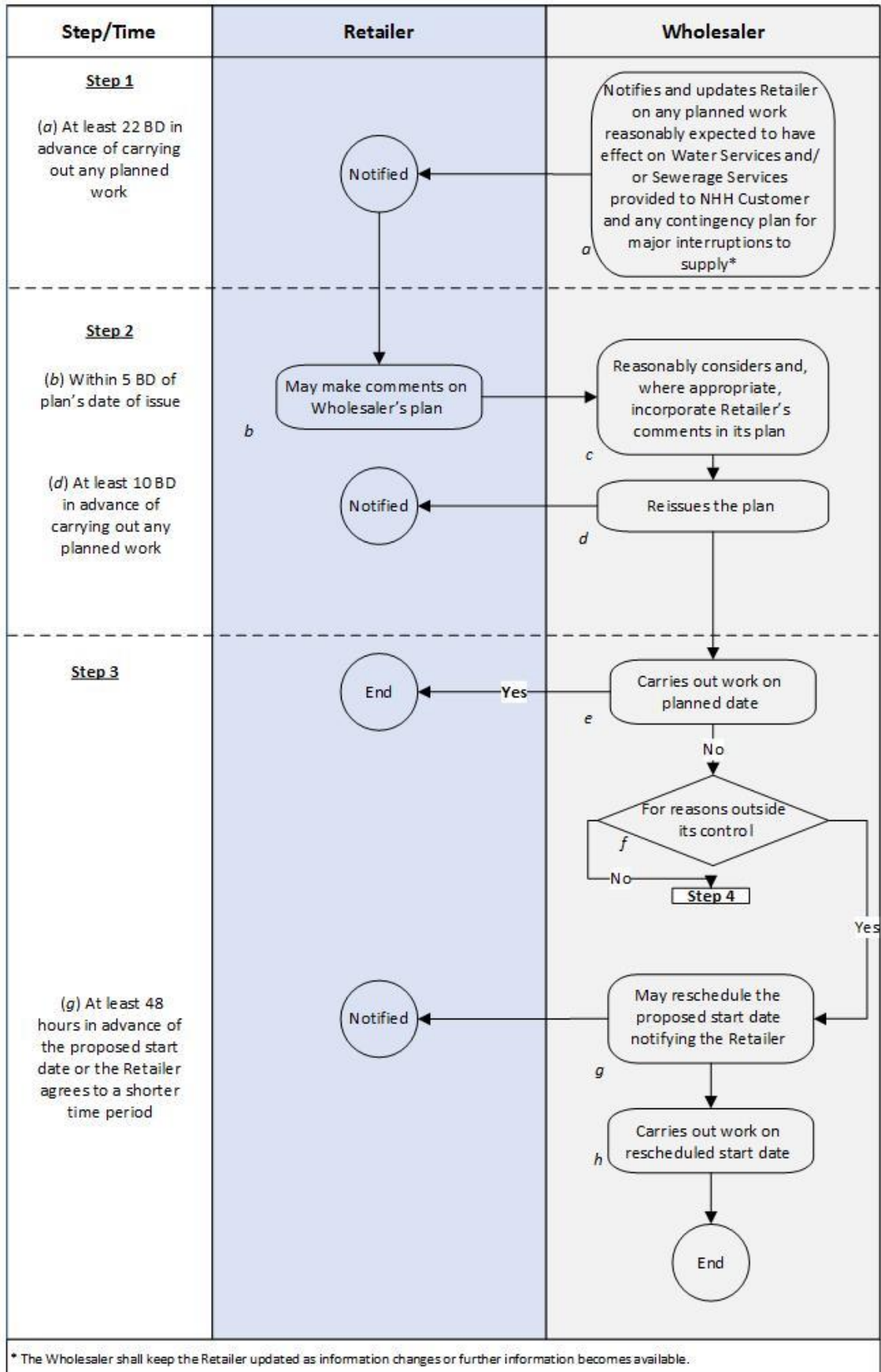
Operational Terms:

Annex D - Process diagrams for part D (Planned activities and affected services)

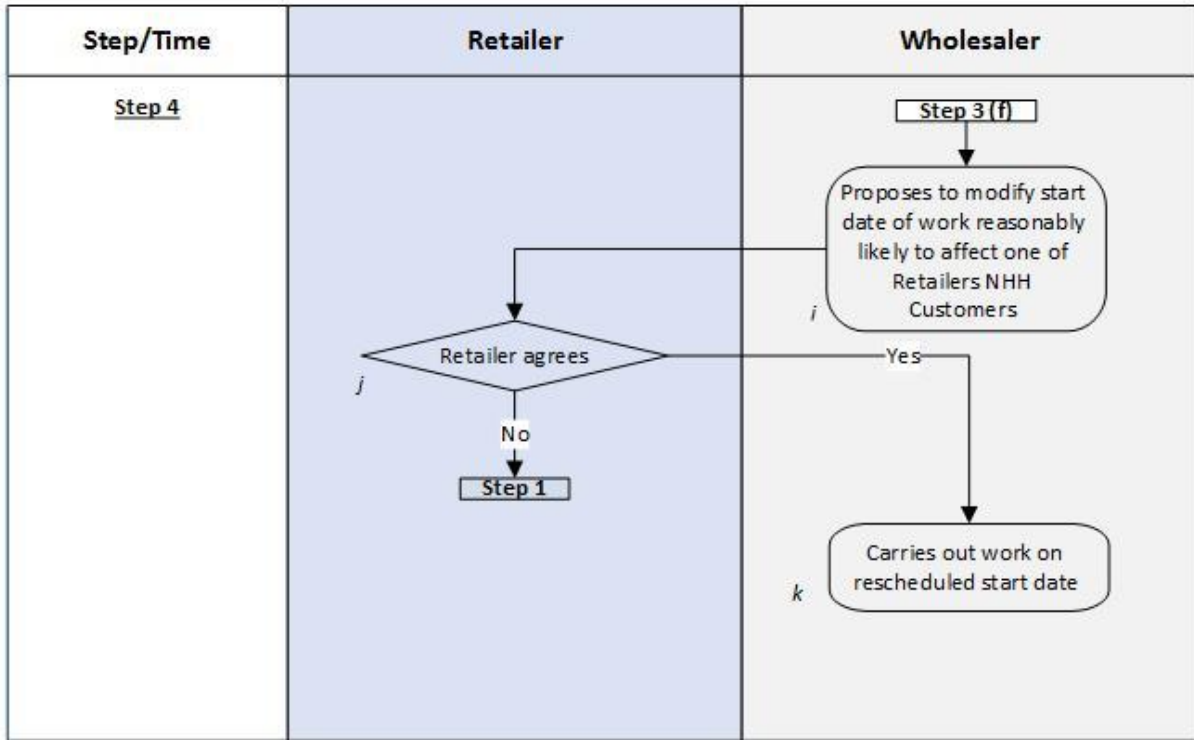
Process D1 – Notification of capital works having an effect on Non-Household Customers – long-term planning



Process D2 – Short-term planned activities [Steps 1 to 3]



Process D2 – Short-term planned activities [Step 4]



Process D3 – Reactive activities

