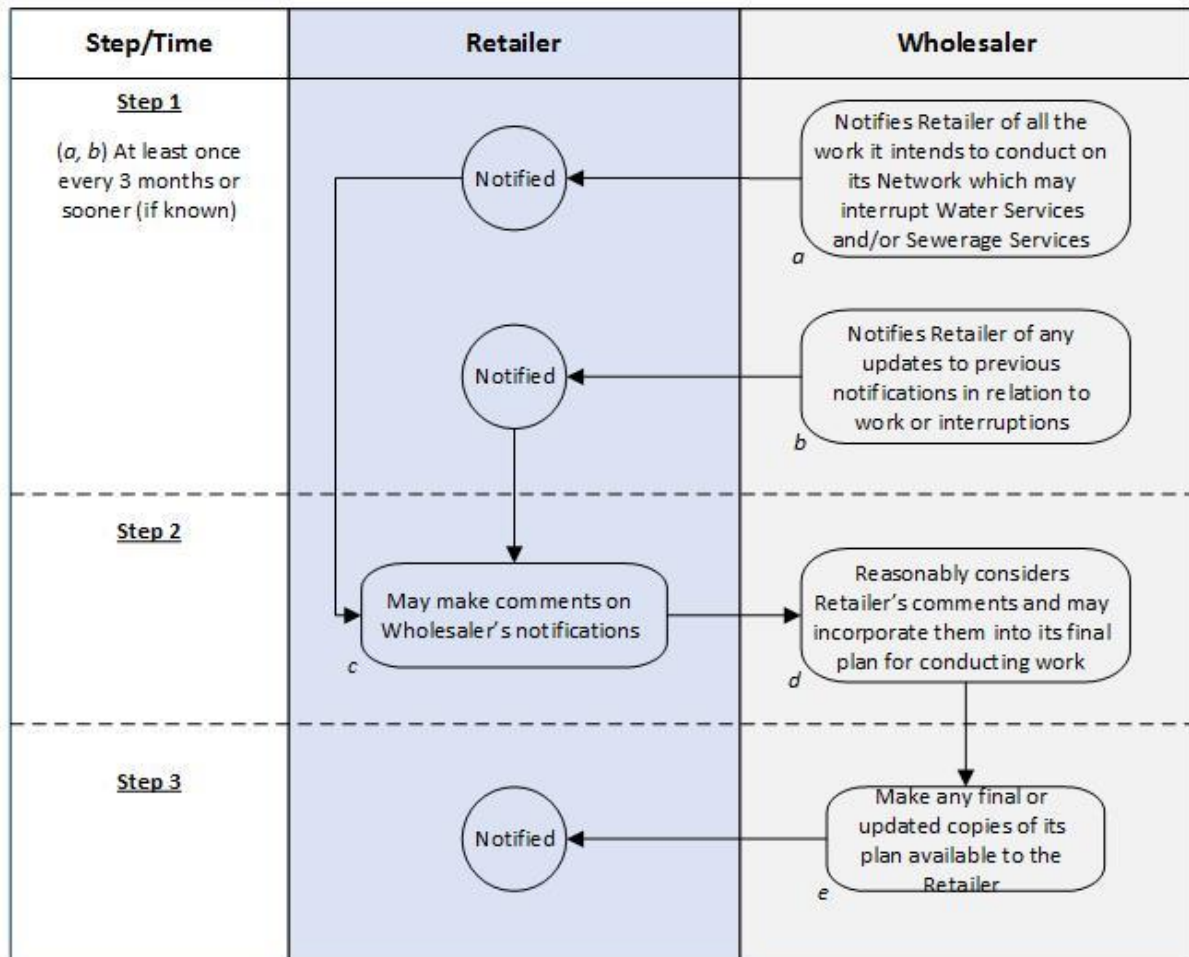


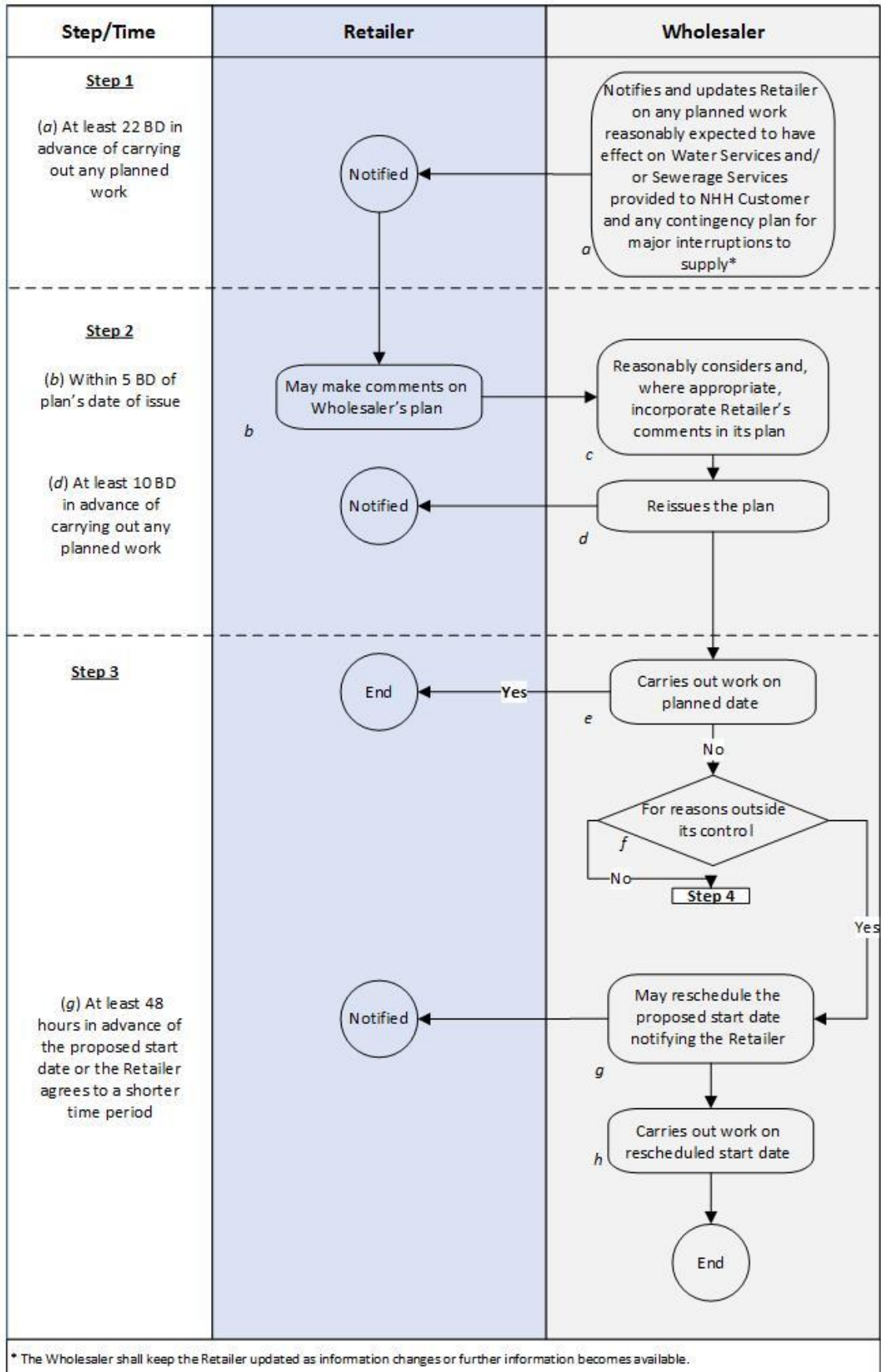
# **Operational Terms: Annex D - Process diagrams for part D (Planned activities and affected services)**

~~September 2015~~

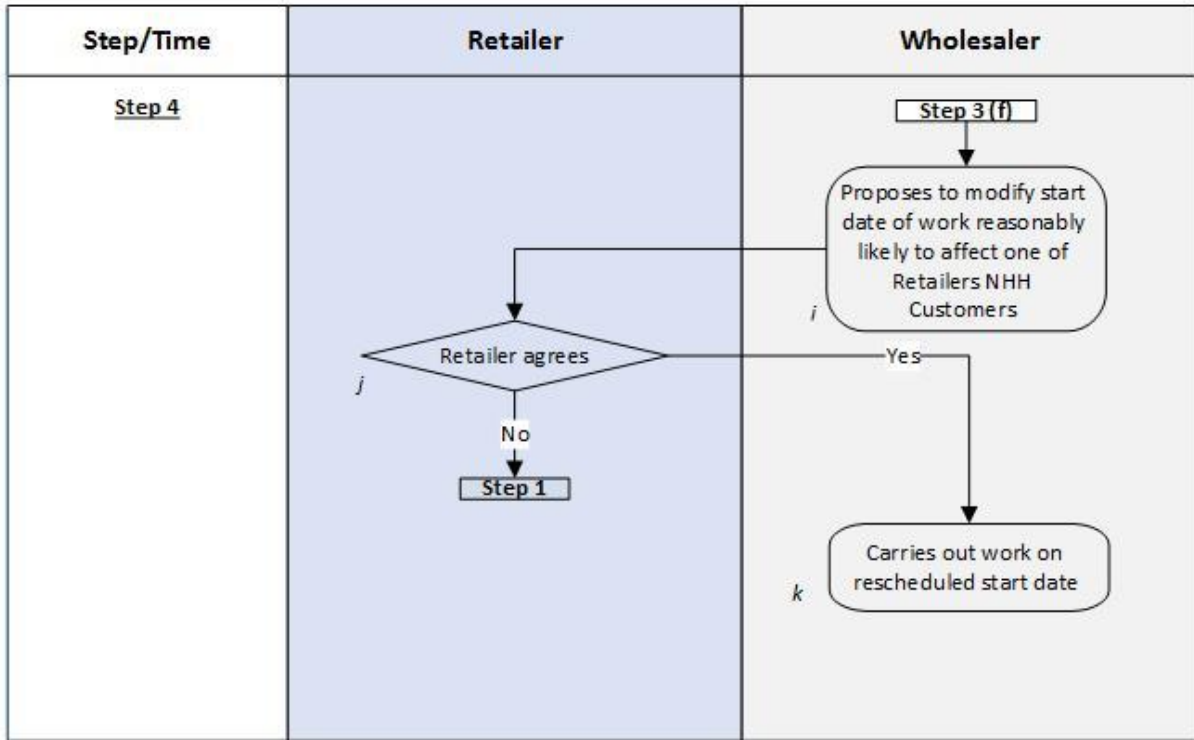
**Process D1 – Notification of capital works having an effect on Non-Household Customers – long-term planning**



**Process D2 – Short-term planned activities [Steps 1 to 3]**



**Process D2 – Short-term planned activities [Step 4]**



**Process D3 – Reactive activities**

