

## **Towards the 2019 price review – Wastewater**

David Black, Senior Director, Water2020

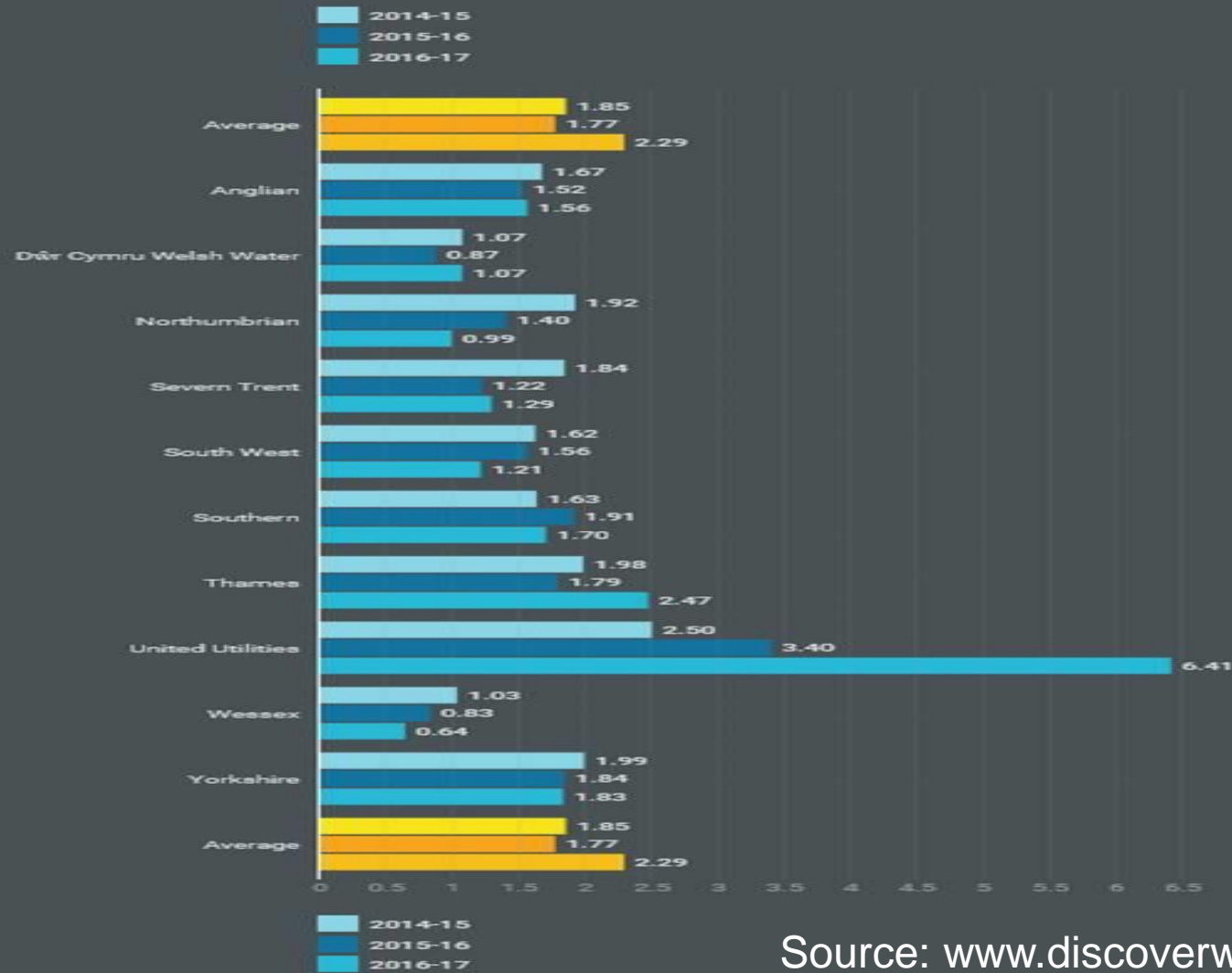
30 January 2018

# Long-term planning & Resilience



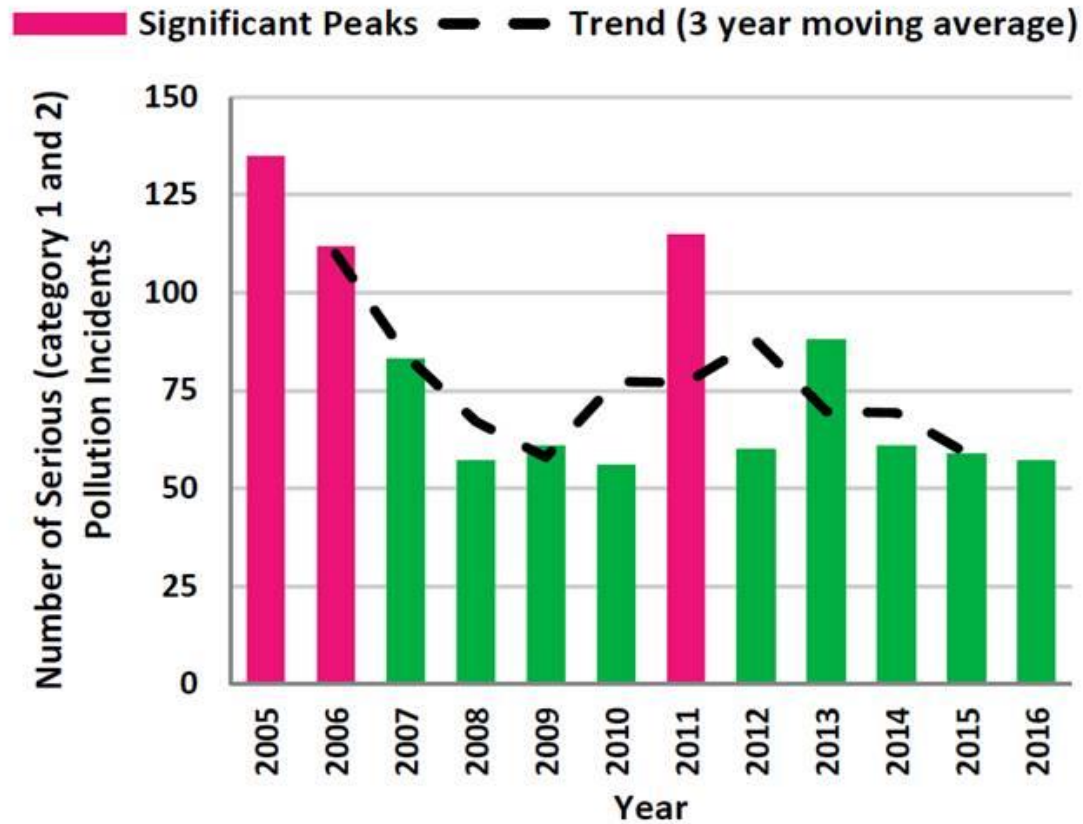
Photo © Imagen

### Sewer flooding (per 10k connections)

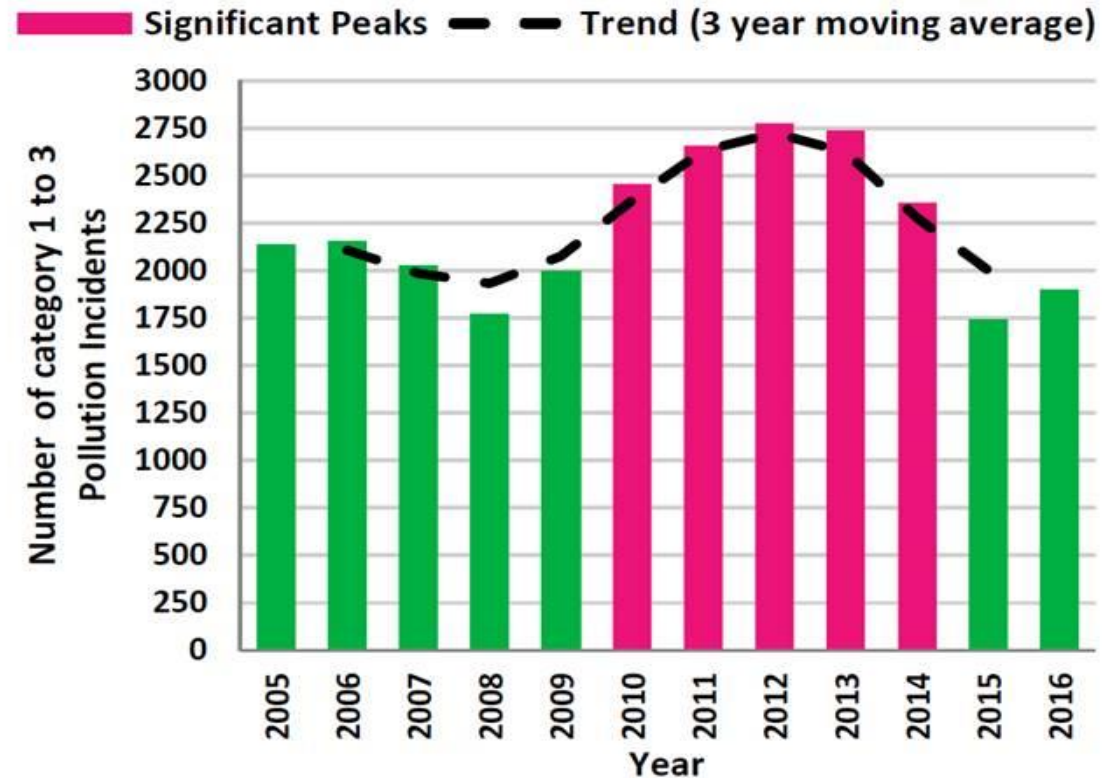


Source: [www.discoverwater.co.uk](http://www.discoverwater.co.uk)

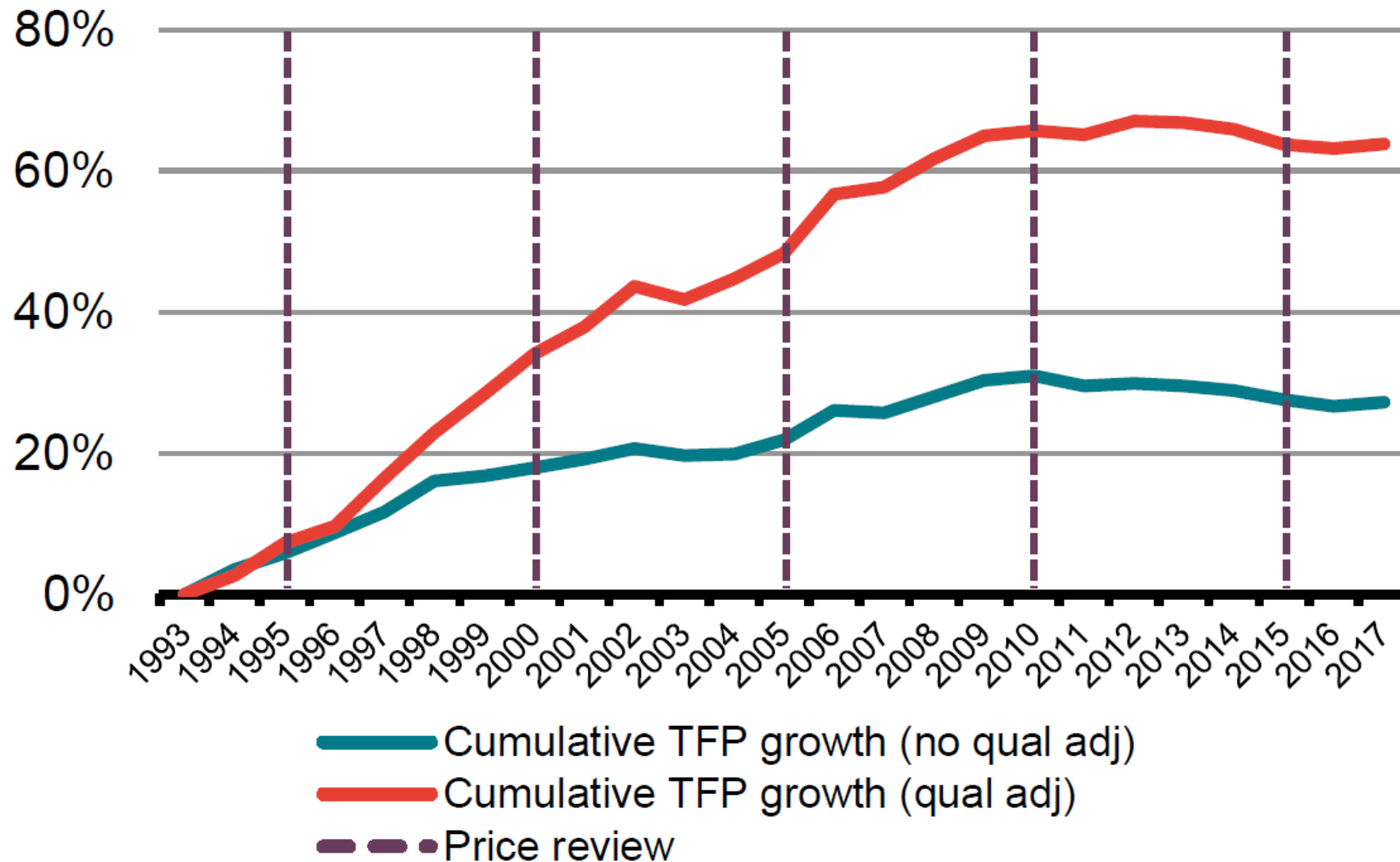
Numbers of serious pollution incidents and trend for the 9 water companies 2005 to 2016



Numbers of category 1 to 3 pollution incidents and trend for the 9 water companies 2005 to 2016

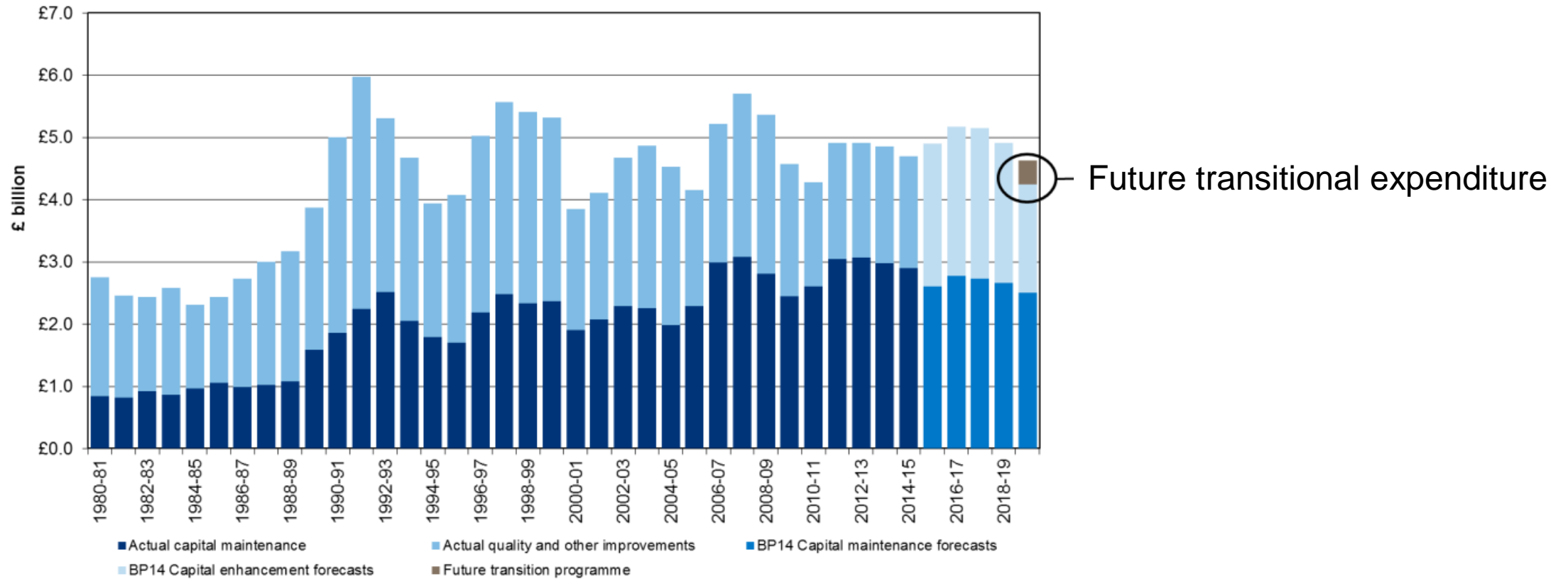


Source: Environment Agency



Source: Frontier Economics (2017) for Water UK

# Transitional expenditure



Source: Water 2020: Regulatory framework for wholesale markets and the 2019 price review (Dec 2015)

# Risk & Return

Intended Weighted Average  
Cost of Capital (WACC): **2.4%**

*PR19 Methodology (Dec 2017)*



# Innovation

Source: Getty Images







[www.ofwat.gov.uk](http://www.ofwat.gov.uk)  
[Twitter.com/Ofwat](https://twitter.com/Ofwat)