

Proposal to grant a variation of appointment to Independent Water Networks Limited to include the site Pear Tree Lane, Loughborough, Leicestershire

	Details
Applicant	Independent Water Networks Limited (“ Independent Water Networks ”)
Site Details	Pear Tree Lane, Loughborough, Leicestershire (“ the Site ”)
Services	Water and Sewerage
Current water/sewerage appointee	Water and Sewerage Appointee: Severn Trent Water Limited (“ Severn Trent Water ”)
Proposed supply arrangements	Bulk supply and bulk discharge agreement with Severn Trent Water
Criterion	Unserved
Household Customer	3,199
Business Customers	12
Developer	William Davis Homes and Persimmon Homes Limited
Estimated Site completion date	2025
Summary of consultation	A statutory consultation made under section 8(3) of the Water Industry Act 1991 (“ WIA91 ”) to grant Independent Water Networks a variation to its appointment as a water and sewerage company. To also vary the appointment of Severn Trent Water as a water and sewerage company. Consequently, Independent Water Networks will become the water and sewerage company for the Site.
Deadline for submissions	<p>Representations or objections to this consultation should be sent by email to Licensing@ofwat.gov.uk or in writing and sent to the NAV licensing team, Centre City Tower, 7 Hill Street, Birmingham, B5 4UA.</p> <p>Reponses must be received by Ofwat no later than 17.00 hours on 17 January 2023.</p>
<p>Further information about how to make representations or objections, including information on the treatment of confidential information, can be obtained from Ofwat at the above address or at http://www.ofwat.gov.uk/foi/.</p> <p>Ofwat will only use the information you have provided for the purpose of this consultation. We will retain your information in accordance with Ofwat’s retention schedule and will not share with third parties unless we have a legal obligation to do so. For further information please see Ofwat’s Privacy Policy in our Publication Scheme.</p>	

1. Our assessment of this application

Our approach

The new appointment and variation mechanism set out in primary legislation¹, provides an opportunity for entry and expansion into the water and sewerage sectors by allowing one company to replace the existing appointee as the provider of water and / or sewerage services for a specific area. This mechanism can be used by new companies to enter the market and by existing appointees to expand their businesses.

You can find further details of our approach to assessing applications for New Appointments and Variations ("NAVs") [here](#).

Unserved status of the Site

To qualify under the unserved criterion, an applicant must show that at the time the appointment is made, none of the premises in the proposed area of appointment is served by the existing appointee.

Independent Water Networks is applying for a variation based on the unserved criterion. Severn Trent Water has provided a letter, dated 2 December 2022, confirming that, in its view, the Site is unserved by it. The Site is large and mainly greenfield. There are no assets and no properties on the Site served by Severn Trent Water. There are buildings cut out from within the boundary which are to remain with the incumbent, Severn Trent Water, visible on the maps. IWN does not anticipate any issues as the customers will retain their existing supplies which will follow existing roads and their supplies will be taken into consideration when new onsite design is conducted.

Given the information provided by Independent Water Networks and Severn Trent Water, we are satisfied that the Site may be considered unserved.

Price

Independent Water Networks will match or better the incumbent's charges and will offer a 2.5% discount against the charges set by Severn Trent Water to customers on the Site. The

¹ The legal framework for new appointments is set out in the WIA91. Section 7 of the WIA91 sets out the criteria by which an appointment or variation may be made. Section 8 sets out the procedure for making that appointment or variation.

Proposal to grant a variation of appointment to Independent Water Networks Limited to include the site Pear Tree Lane, Loughborough, Leicestershire

2.5% discount is to be reviewed annually. There are also savings to those opting to pay by Direct Debit or via ebilling.

Levels of service

Every appointee is required under its licence conditions to publish and make available the Core Customer Information for its household customers. We have assessed Independent Water Network's proposed Customer Code of Practice, and our view is that it is of an appropriate standard. Our view is that customers on the Site would be no worse off in relation to the scope of Independent Water Networks' proposed Customer Code of Practice than they would be if Severn Trent Water were to be the customers' water and sewerage company.

Stakeholder engagement

We take the view of the Environment Agency², the Drinking Water Inspectorate ("**DWI**"), and the Consumer Council for Water ("**CCW**") into account before progressing to formal consultation on an application.

The Environment Agency informed us that it is content for us to consult on this application.

The DWI is satisfied that Independent Water Networks understands the obligations under the Water Industry Act 1991 (as amended), the Water Supply (Water Quality) Regulations 2016 (as amended) and the Water Industry (Suppliers' Information) Direction 2021. The DWI therefore raises no comments or objections to Ofwat proceeding to consultation and decision for applications submitted by Independent Water Networks.

As part of the application process Ofwat has engaged with CCW. CCW's position is that NAVs should bring benefits to customers on the proposed NAV site. CCW expects New Appointees to provide consumers with prices, levels of service or service guarantees that match or, ideally, better those of incumbent water and/or sewerage companies. CCW has stated that it is satisfied that Independent Water Networks as an established New Appointee, offers customers on its NAV sites prices and levels of service which match or better those offered by the incumbent water and/or sewerage companies which would otherwise serve the site. CCW agrees with Ofwat's assessment that customers on the Site will be no worse off if served by Independent Water Networks and so, overall, supports the proposed variation of appointment.

CCW recognises that due to the small size of Independent Water Networks' customer base, it does not currently offer its financially vulnerable customers a social tariff in the way that the

² The Environment Agency as well as the Drinking Water Inspectorate will also be formally consulted on the proposals, as they are on the list of organisations which must be formally consulted as set out in section 8(4)(b) of WIA91.

Proposal to grant a variation of appointment to Independent Water Networks Limited to include the site Pear Tree Lane, Loughborough, Leicestershire

incumbent companies do but does offer the standard WaterSure tariff for qualifying customers. CCW considers that it is appropriate for Independent Water Networks to tailor the services it provides, until it can offer a formal social tariff, ensuring customers are provided with appropriate flexible support where needed.

CCW has also considered the impact on an incumbent's existing customers when a NAV site is approved. It notes that in many cases there is a potential cost on the annual water and/or sewerage bills of these customers. While this cost is negligible on an individual site basis, CCW is unclear of the wider benefits of the NAV regime for incumbents' customers, particularly as the number of sites in each incumbent area increases and the cumulative cost rises.

Impact on existing customers

In considering whether customers will be no worse off, we also considered the potential effects of this variation on the prices that Severn Trent Water existing customer base may face. The calculation necessarily depends on a range of assumptions, and there are clearly difficulties involved in quantifying the effect. It is therefore necessary to use a simplified set of figures. We have expressed the effect in 'per bill' terms to try to quantify the possible effect in an easily understandable way.

We have assessed the potential magnitude of this impact by comparing how much Severn Trent Water might have expected to receive in revenue from serving the Site directly, were it to serve the Site, with the revenues it might expect from the proposed arrangement with Independent Water Networks.

We estimate a potential £0.04 annual increase on the water bills and a potential £0.03 annual increase on the sewerage bills of existing Severn Trent Water customers if we grant this variation to Independent Water Networks. This is once the Site is fully built out.

This estimate does not take into account the potential spill-over benefits to customers arising from dynamic efficiencies achieved as a result of the competitive process to win sites.

Therefore, we consider that granting this variation to Independent Water Networks would have a small financial impact on customers' bills and could have potential benefits for customers.

Proposal to grant a variation of appointment to Independent Water Networks Limited to include the site Pear Tree Lane, Loughborough, Leicestershire

Ability to finance and properly carry out its functions

We have a statutory duty to ensure that efficient appointees can finance the proper carrying out of their functions. When a company applies for a new appointment or variation, it must satisfy us that it is able to carry out all of the duties and obligations associated with being an appointed water or sewerage company.

We have considered the financial position of Independent Water Networks in relation to providing water and sewerage services to the Site. We have also considered the revenues and costs of the Site and risks that are specific to this Site and are satisfied that the Site demonstrates sufficient financial viability.

On this basis we are currently satisfied that Independent Water Networks would be able to finance its functions if the variation is granted.

Independent Water Networks has an unlimited Keepwell agreement from its owner Brookfield Utilities UK Limited ("**BUUK**") in July 2013.

Independent Water Networks has confirmed that this agreement is still in place and will cover this proposed new site. BUUK continues to hold an investment grade credit rating with Moody's.

On this basis, we are currently satisfied that Independent Water Networks would be able to finance its functions if the variation is granted.

2. Conclusion and next steps

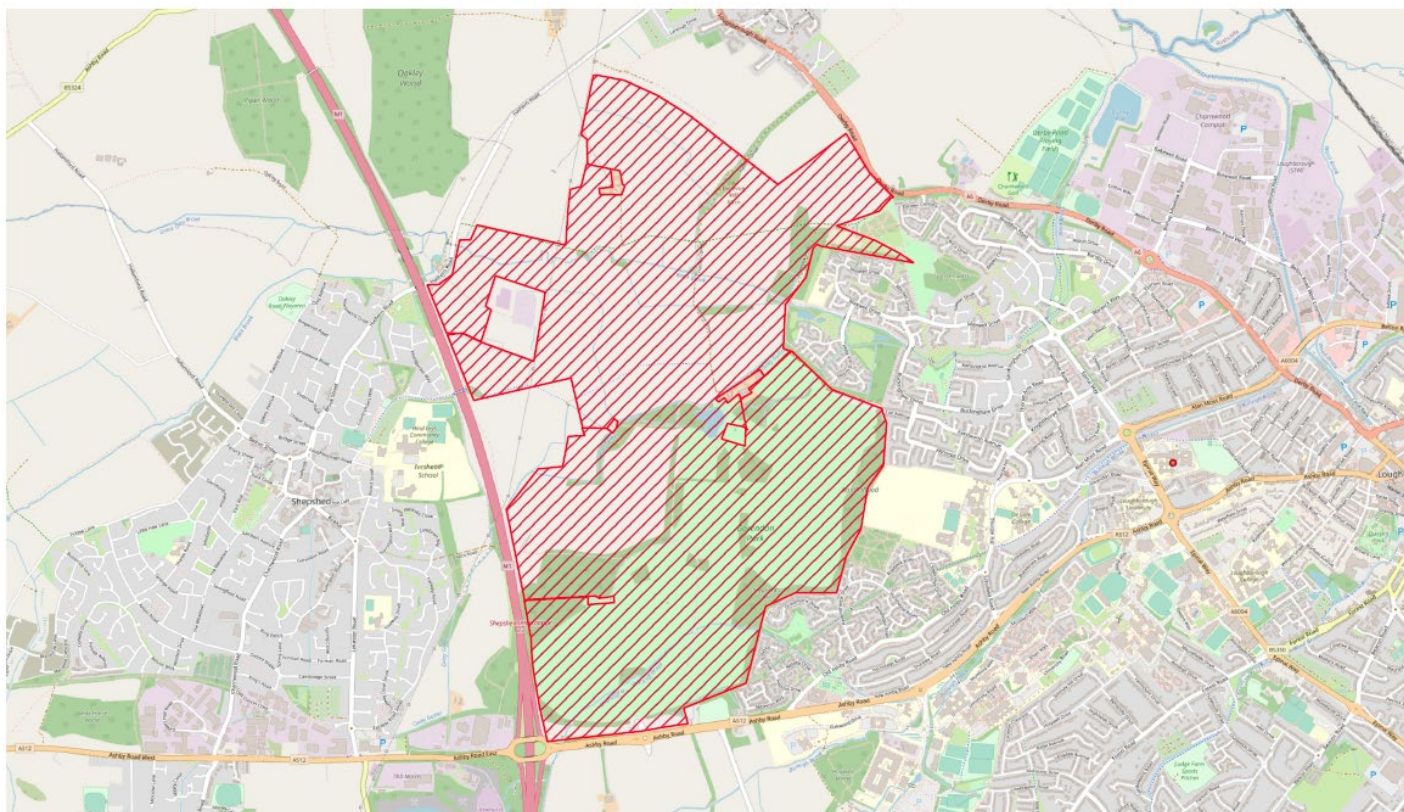
In assessing Independent Water Networks' application, we have considered the general benefits of new appointments and variations. Our view is that our two key policy principles would be met in this case, as customers would be no worse off, and Independent Water Networks would be able to finance, and carry out, its functions. We have also considered the effects of granting the proposed variation on the existing customers of Severn Trent Water.

We are currently minded to grant the variation under the unserved criterion. Subject to considering any representations submitted during the consultation period in response to this consultation notice, Ofwat will decide whether or not to grant the variation of appointment set out above.

Proposal to grant a variation of appointment to Independent Water Networks Limited to include the site Pear Tree Lane, Loughborough, Leicestershire

3. Site maps

Water boundary



PLAN REFERRED TO IN THE VARIATION OF THE APPOINTMENTS OF INDEPENDENT WATER NETWORKS LIMITED AND SEVERN TRENT WATER LIMITED, AS WATER UNDERTAKERS, MADE BY THE WATER SERVICES REGULATION AUTHORITY ON ...

ADDRESS: Pear Tree Lane, Loughborough, LE11 4FT
OS GRID REFERENCE: 450687, 318534

SCALE: 1:25000
DRAWN BY: SC
DATE: 29/11/2022

0 500 1,000 m

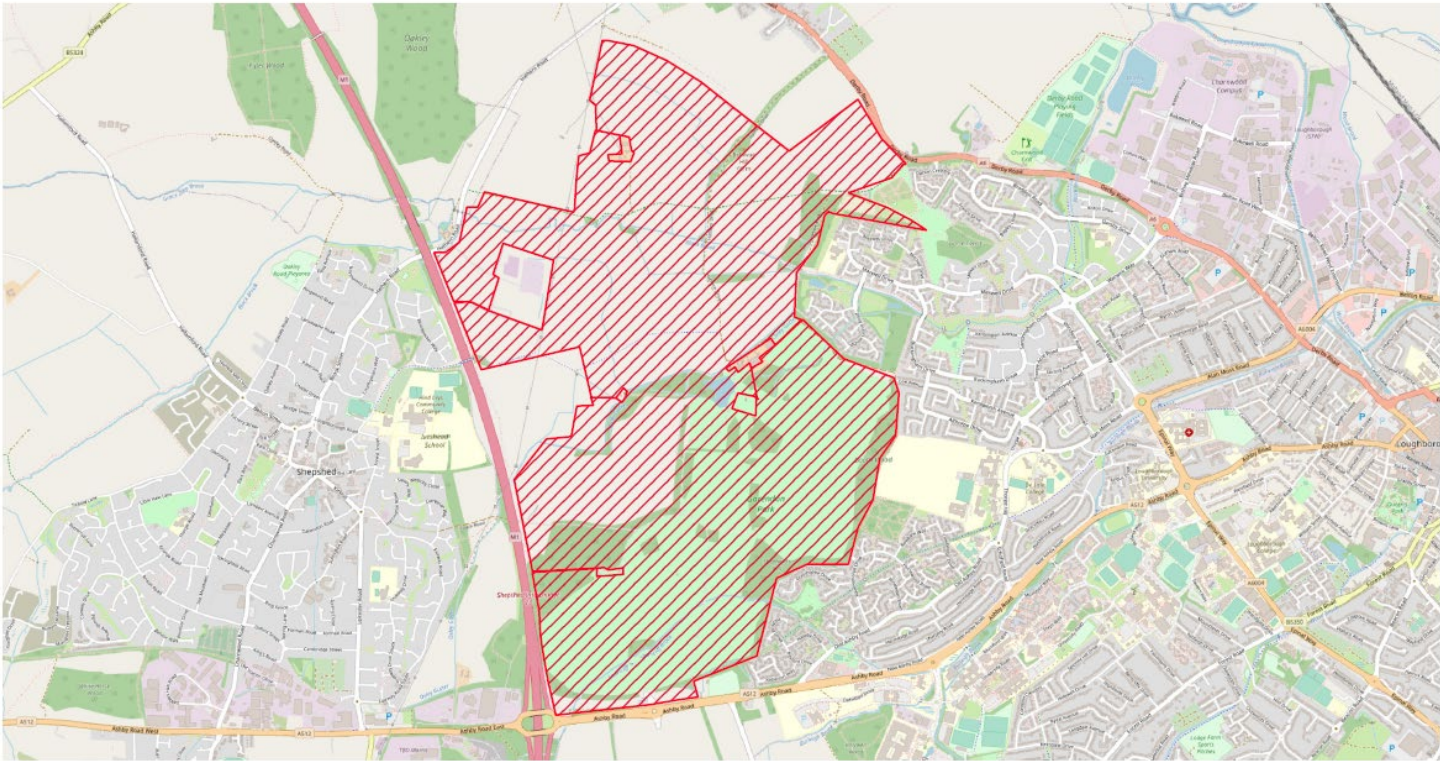


PEAR TREE LANE

INSET WATER MAP 1

Proposal to grant a variation of appointment to Independent Water Networks Limited to include the site Pear Tree Lane, Loughborough, Leicestershire

Sewerage boundary



PLAN REFERRED TO IN THE VARIATION OF THE APPOINTMENTS OF INDEPENDENT WATER NETWORKS LIMITED AND SEVERN TRENT WATER LIMITED, AS SEWERAGE UNDERTAKERS, MADE BY THE WATER SERVICES REGULATION AUTHORITY ON ...

ADDRESS : Pear Tree Lane, Loughborough, LE11 4FT
OS GRID REFERENCE: 450687, 318534
SCALE: 1:25000
DRAWN BY: SC
DATE: 29/11/2022

0 500 1,000 m



PEAR TREE LANE
INSET SEWERAGE MAP 1